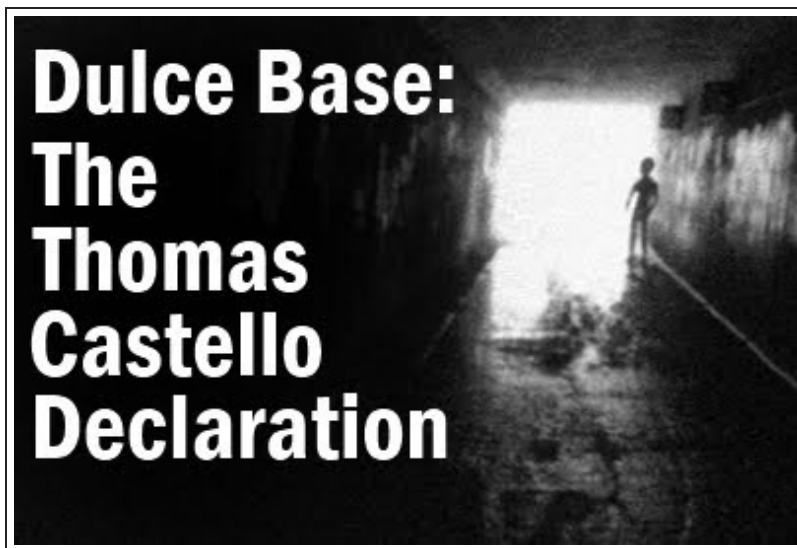


[Report Abuse](#) [Next Blog»](#)[Create Blog](#) [Sign In](#)

A DAILY DOSE OF PARANORMAL PHENOMENA, CRYPTIDS, UFOS, ULTRATERRESTRIALS,  
MULTIDIMENSIONAL BEINGS, CONSPIRACIES AND ALTERNATIVE NEWS

SATURDAY, NOVEMBER 19, 2011

## Dulce Base: The Thomas Castello Declaration - Part I



Thomas Edwin Castello claimed to be a former [security](#) technician, employed by the RAND Corporation, at the Dulce underground facility. To be honest, there is some doubt as to whether he actually existed. He allegedly stole a set of controversial papers called the "Dulce Papers," along with over 30 black and white photos and a [video tape](#). Castello passed away (or simply disappeared) about a year after providing answers to a series of questions submitted to him.

According to Castello, in 1961 he was a young sergeant stationed at Nellis Air Force Base near Las Vegas, Nevada. His job was as a military photographer with a top secret clearance. He later transferred to West Virginia where he trained in [advanced](#)

**Subscribe now! Enter your email address and grab your free daily dose of**  
***Phantoms and Monsters***  
**You will only receive one email per day**

Subscribe

Delivered by FeedBurner

**Have you had a close encounter or witnessed something unusual?**  
Send us an email

\*\*\*\*\*

Search the  
***Phantoms & Monsters***  
Archives

search

site search by freefind

advanced

\*\*\*\*\*

**Join Eric & Lon**  
**LIVE**  
**Sunday 8PM ET/ 7PM CT**

intelligence photography. He worked inside an undisclosed underground [installation](#), and due to the nature of his new assignment his clearance was upgraded to TS-IV. He remained with the Air Force as a photographer until 1971 at which time he was offered a job with RAND Corporation as a Security Technician, and so he moved to California where RAND had a major facility and his security clearance was upgraded to ULTRA-3.

In 1977 Thomas was transferred to Santa Fe, New Mexico where his pay was raised significantly and his security clearance was again upgraded...this time to ULTRA-7. His new job was as a photo security specialist in the Dulce installation, where his job specification was to maintain, align and calibrate [video monitoring cameras](#) throughout the underground complex and to escort visitors to their destinations.

Once arriving in Dulce, Thomas and several other new 'recruits' attended a mandatory meeting where they were introduced to the *Big Lie*, that:

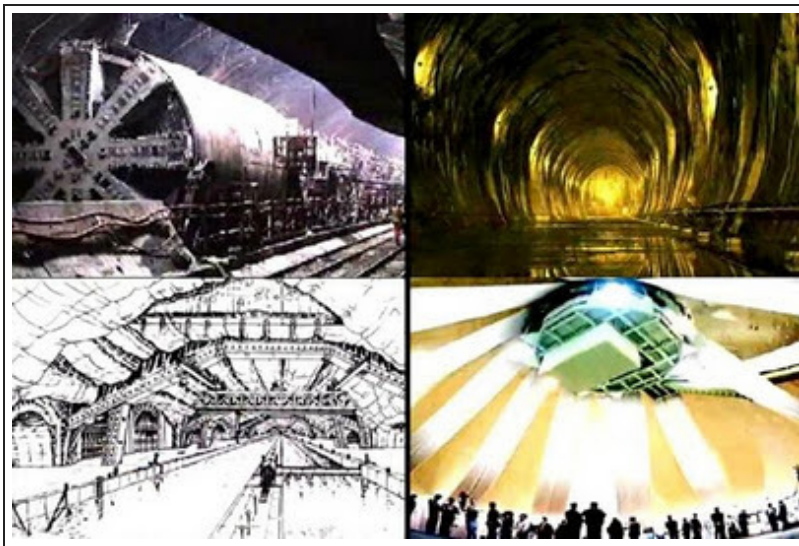
*"...the subjects being used for genetic experiments were hopelessly insane and the research is for medical and humane purposes."*

The briefing ended with severe threats of punishment for being caught talking to any of the 'insane' or engaging in conversations with others not directly involved with ones current task. Venturing outside the boundaries of ones own work area without reason was also forbidden and, most of all, discussing the existence of the joint Alien/U.S. government base to any outsider would generate severe and, if necessary, deadly repercussions. At first his encounters with actual gray and reptilian beings in the base were exhilarating, but soon he became acutely aware that all was not what it appeared to be.



**In-depth alternative  
talk radio**





## THE THOMAS CASTELLO DECLARATION - PART 1

Q -- When exactly was the [upper human-occupied level of the] Archuleta installation constructed?

A -- I heard Dulce was started in 1937-38 by the Army engineers, enlarged over the years, most recent work was completed 1965-66 to connect tunnels to the Page [Arizona] Base, site of one of the older underground facilities. The Four Corners base is called PERICA. Most of the Native [Americans](#) [the Indians] living in that area are aware of that base, and could tell us about the underground life forms that frequently are spotted near those communities, Bigfoot, etc.

Q -- By what means was the [upper] [installations](#) constructed? Are you familiar with the alleged developments made by the Rand Corporation of a highly-efficient bore or mole machine capable of melting rock using nuclear powered wolfram-graphite tipped 'drill-cones'?

A -- According to several [senior](#) maintenance workers, part of it was blasted by nuclear devices in the sixties. There are sections, like the shuttle tunnels, that were formed by an advanced tunneling machine that leaves the tunnel walls smooth. The finished walls in those tubes resemble polished [black glass](#).

Q -- By WHOM was the Dulce installation originally constructed?

A -- Nature started the caverns. The Draco [reptilian humanoids] used the caverns and tunnels for centuries. Later, through RAND Corporation plans, it was enlarged repeatedly. The original caverns

## Find us on Facebook



**Phantoms and Monsters**

Like

3,403 people like **Phantoms and Monsters**.



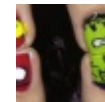
Lucian



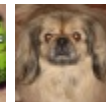
Ron



Anthony



Alisa



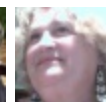
Melissa



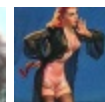
Steve



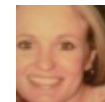
Ken



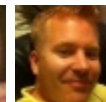
Maria



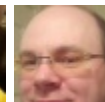
Laur



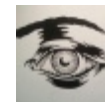
Jaime



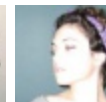
Clint



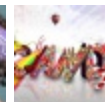
Dan



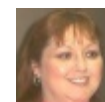
Otto



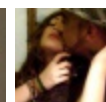
Lauren



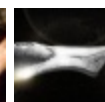
Candy



Otto



Lauren



Candy

Facebook social plugin

## Great Titles!



The Encyclopedia...  
Rosemary Ell...  
**\$15.99**



The Encyclopedia...  
Rosemary Ell...  
**\$16.47**



Witches and Wiccans (...)  
Rosemary Ell...  
**\$10.95**



Talking to the Dead  
George Noor...  
**\$16.93**

Fairies (Mysteries,...)

included ice caves and sulfur springs that the 'aliens' found perfect for their needs. The Dulce caverns rival Carlsbad caverns in size.

Q -- What exactly are the cattle [and human] organs such as blood, anal tissue, eyes, reproductive organs, tongues, etc. used for -- i.e. the organs obtained via cattle and human mutilations?

A -- Read the so-called Dulce Papers.

Q -- Are the various electromagnetically-controlled air or space craft -- [that have been seen] leaving from and arriving at Mt. Archuleta -- manned by humans, the 'alien entities', or both?

A -- Archuleta Mesa is a minor area...the craft leave [and are stored] in five areas. One is SE of DULCE, one near Durango Co., one at Taos, N. M., and the main fleet is stored at LOS ALAMOS [under].

Q -- Others have suggested that some of the entities below Dulce are not of 'extraterrestrial' ORIGIN, and that they are actually descended from saurian or reptiloid beings such as the Velociraptors or Stenonychosaurus Equallus -- a 'serpentine' race or [races](#) similar to that hinted at in the third chapter of the [book](#) of Genesis?

A -- Yes, some 'reptoids' are native to this planet. The ruling caste of 'aliens' ARE reptilian. The beige or white beings are called The Draco. Other reptilian beings are green, and some are brown. They were an ancient race on Earth, living underground. It may have been one of the Draconian beings that 'tempted' Eve in the Garden of Eden. Reptoids rightly consider themselves "native Terrans." Perhaps they are the ones we call the Fallen Angels. Maybe not, either way, we are [considered] the 'squatters' on Earth.

Q -- Some have suggested that the so-called underground 'E.T.' bases and tunnels may, for a large part, be literally thousands of years old... constructions of an antediluvian race which attained to a considerable level of scientific complexity, and who were destroyed by a Divinely-initiated cataclysm which took place after they attempted to merge their science with occult/supernatural forces.

For instance some have suggested that the Bermuda Triangle phenomena may be the result of an out-of-control Atlantean experiment that led to a space-time disaster which produced "electromagnetic fallout" in the Triangle area and elsewhere after they had accidentally loosed powerful forces and energies into the world that they knew very little about. Do your observations tend to



Rosemary Ell...  
**\$10.95**



Monsters of  
West Virgi...  
Rosemary Ell...  
**\$10.04**



The Vengeful  
Djinn: Unv...  
Rosemary Ell...  
**\$13.19**



[Get Widget](#)

[Privacy](#)



**Phantoms and Monsters**  
**Now Available on**  
**Kindle**  
**[CLICK HERE](#)**



Lon Strickler

**PhantomMonster**

[PhantomMonster](#) Paranormal Theories, Thoughts and Recollections: The following articles and anecdotes were...  
[goo.gl/fb/2JFhv](http://goo.gl/fb/2JFhv)  
5 hours ago · [reply](#) · [retweet](#) · [favorite](#)

[PhantomMonster](#) Paranormal Theories, Thoughts and Recollections [nblo.gs/zXabI](http://nblo.gs/zXabI)  
5 hours ago · [reply](#) · [retweet](#) · [favorite](#)



confirm or refute such a possibility?

A -- I'm not sure about the Divine part, but these 'aliens' consider themselves 'NATIVE TERRANS.'

Q -- Where do the little gray Aliens fit in?

A -- They work for, and are controlled by the Draco. There are other gray skinned beings that are not in league with the Draco.

Q -- Did you ever talk to any of the 'Aliens' at the Base?

A -- Since I was the Senior Security Technician at that base, I had to communicate with them on a daily basis. If there were any problems that involved security or video camera's, I was the one they called. It was the reptilian "working caste" that usually did the physical labor in the lower levels at Dulce.

Decisions involving that caste were usually made by the white Draco. When human workers caused problems for the working caste, the reptoids went to the white Draconian 'boss', and the Draco called me. At times, it felt like it was a never ending problem. Several human workers resented the "no nonsense" or "get back to work" attitude the working caste lives by.

When needed, intervention became a vital tool. The biggest problem were human workers who foolishly wandered around near the "OFF LIMITS" areas of the "Alien Section." I guess it's human nature to be curious and to wonder what is past the barriers. Too often someone found a way to bypass the barriers and nosed around. The camera's near the entrance usually stopped them before they got themselves in serious trouble. A few times I had to formerly request the Return of a human worker.

Q -- Are there other sites tied-in to the 'shuttle network' other than those which you mentioned, and if so, where are the entrances?

A -- WHERE!?! EVERYWHERE! THEY CRISS CROSS THE WORLD AS AN ENDLESS SUBTERRANEAN HIGHWAY. LIKE A FREEWAY, EXCEPT THIS ONE IS UNDERGROUND... The subterranean highway in America is like a freeway except it's underground. That highway depends on electric motors [for trucks, cars and buses] for the paved roads, and it is for limited travel.

There is another style of transit for freight and for passengers that is for rapid travel. That world wide network is called the "Sub-Global

PhantomMonster I added @edshow as one of my influencers on @klout. Who influences you? [klout.com/user/PhantomMo...](http://klout.com/user/PhantomMo...)  
6 hours ago · reply · retweet · favorite

PhantomMonster I gave @moongarden1971 +K about Social Media on @klout. [klout.com/plusk/gave/855...](http://klout.com/plusk/gave/855...)  
6 hours ago · reply · retweet · favorite

PhantomMonster I gave Anna Lisa Dominguez-Gutierrez +K about Paranormal Activity on @klout. [klout.com/plusk/gave/855...](http://klout.com/plusk/gave/855...)  
6 hours ago · reply · retweet · favorite

PhantomMonster I added @TheCryptoCrew as one of my influencers on @klout. Who influences you? [klout.com/user/PhantomMo...](http://klout.com/user/PhantomMo...)  
9 hours ago · reply · retweet · favorite



Join the conversation



Donate

**Support  
'Phantoms and Monsters'  
Thanks!**

7218 readers  
BY FEEDBURNER



FAVE THIS BLOG  
TECHNORATI

A TOP TEN WEBSITE  
Top Paranormal Sites

System." It has "check points" at each country entry. There ARE shuttle tubes that 'shoot' the trains at incredible speeds using a mag-lev and vacuum method. They travel at a speed that excels the speed of sound. Part of your question involves the location of entrances to that base. The easiest way to answer is to say every state in the U.S.A. has them.

Frequently, the entrances are camouflaged as sand quarries, or mining operations. Other complex portals are found on military bases. New Mexico and Arizona have the largest amounts of entrances followed by California, Montana, Idaho, Colorado, Pennsylvania, Kansas, Arkansas and Missouri. Of all the state's Florida and North Dakota have the least amount of entrances. Wyoming has a road that opens directly into the subterranean freeway. That road is no longer in use, but could be reactivated if they decide to do so, with minimal cost. It's located near Brooks Lake.

Q -- Are there any 'bases' in the state of Utah?

A -- Salt Lake, Lake Powell Area, Dark Canyon, Dougway Grounds, Modena, Vernal. All have exits there. Others too.

Q -- Does the Mt. Archuleta "shuttle system" connect with a shuttle system which allegedly radiates from Mt. Shasta in northern California?

A -- Yes. Mt. Shasta is a major site of Alien - Elder Race - Reptilian Race - Human meetings. Beginning Cleveland, Grover every president in U.S. history have visited Telos City. Truman was supposed to have visited the Lower Realms as a High Archon on Earth. He was supposed to have met the King of the World there, and gave him the "Keys to the U.S.A."

Q -- Did you notice any involvement of high-level Freemasons, Rosicrucians or Jesuits within the underground installation and/or with the aliens?

A - Yes I did, but that is a loaded question, and I won't comment further. I'm not a Mason, or member of any other secret fraternal group. There is one organization I am a member of [in the U.S.A.]. That group is commonly called the "Central Unit." It is a pleasure to tell you that I AM a member of the "Sub-Galactic League" of Costa Rica.

Q -- Is there any truth to the allegations that the CIA/'Aliens' have



established 'bases' on the moon, and also Mars?

A -- I've HEARD that too, but I haven't seen proof with my own eyes. The 'aliens' do allegedly have bases on several moons of Jupiter and Saturn. The CIA operates in other COUNTRIES, but I've never heard they operate on other PLANETS.

Q -- Have you heard any hints or rumors suggesting that there may be lower levels beneath the ULTRA-7 level of the Dulce base, and also, where these might lead to and what they might consist of?

A -- YES. Your guess is as good as mine... Sure, there was lots of TALK but that doesn't mean it's there. However, I will tell you I saw elevators that were "off limits" unless you had an UMBRA or higher security clearance. At that base, information is supplied to me at a "need to know" basis ONLY! [My clearance was ULTRA-7]

Q -- Some insist that the U.S./Secret government has developed it's own disk-craft based largely upon top secret antigravity experiments carried out by the Nazi-German scientists during World War II. Have you heard anything referring to this?

A -- When I was working in Photo-security, heard a lot of talk, never saw the proof, but once in the Air Force I developed a roll of film that showed a craft LIKE ADAMSKI'S, WITH A SWASTIKA ON THE SIDE.

Q -- Tom, did you have access to the alien craft? Were you ever inside any of them?

A -- Yes, I frequently saw them in the garages, there are quite a few of them. The main fleet is stored at Los Alamos. Yes, I entered several crafts. There were two things that stick in my mind, the odd spongy feeling of the floors, and the unusual pinkish purple color of the lighting.

The crew stated the floor becomes ridged in flight, and the purple tint of the lighting changes to bright blue white. The entire inside of the air craft are scaled down in size, when compared to the average human. The halls were curved and narrow, but some how, when inside it appears bigger than it looks. Certain areas, the outermost sections, almost felt and looked alive. I was never taken up in one.

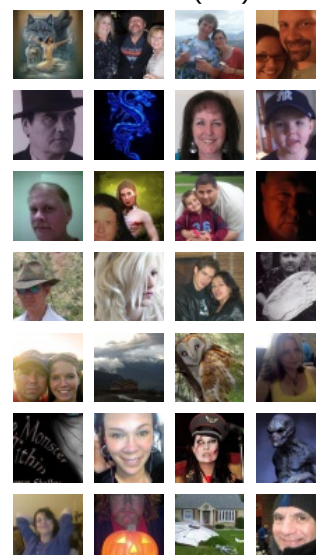
Q -- Can you give me more information on the reptilian race, what do they do on the sixth level? [The area called Nightmare Hall.]



**HUGE  
Music & Movie  
Selection!**



Followers (642)



Follow this blog

**Have you had a close  
encounter or witnessed  
something unusual?**

Send us an email

**PREVIOUS POSTS**

Just the Facts? Scientists Claim  
Alien Mummy in Pe...

The Travis Walton Abduction: I  
Still Have Doubts

Just the Facts? Natalie Wood's  
Death Case Reopened...

The Old Man's Ring

A -- The worker caste does the daily chores, mopping the latex floors, cleaning the cages, bringing food to the hungry people and other species. It is their job to formulate the proper mixture for the type one and type two beings that the Draco Race has created. The working caste work at the labs as well as at the computer banks. Basically speaking, the reptilian races are active at all levels of the Dulce Base. There are several different 'races' of aliens that work on the east section of level six.

That section is commonly called "the alien section." The Draco are the undisputed masters of the 5-6-7 levels. The humans are second in command of those levels. I had to ARGUE with one large Draconian 'boss' frequently. His name is difficult to verbalize, Khaarshfashst [pronounced throaty kkhah-sshh-fahsh-sst]. I usually called him 'Karsh,' and he hated it. The Draconian leaders are very formal when talking to the human race. These ancient beings consider us a lower race. Karsh called me "Leader Castello," but it was used in a sarcastical way. However the worker caste is friendly enough, as long as you allow them to speak first.

They will answer if you address them. They are very cautious beings, and consider most humans to be hostile. They always seem surprised when they found many of the humans were open and trustworthy. There is no fraternizing with the aliens off hours. It is forbidden to speak to any alien race [in the halls or an elevator] without a clear business oriented reason. Humans can talk to humans, and aliens can speak to aliens, but that is as far as it goes. At the work site, however, it's different. There is "free speech" in the labs.

The camaraderie found in the labs also reaches the computer banks section. In those areas, everybody talks to anybody. However, everything changes the minute you cross the threshold of the hall. Instantly, all conversations become strictly formal. Hard as it was, several times I had to arrest some one, simply because they spoke to an alien. It's a strange place.

Q -- Exactly what first made you aware that something was wrong at Dulce? Seems to me that a place as obviously horrible as this one wouldn't need an Einstein to know that this is a CRIME site! What took you so long? Are you the guy who blew the whistle?

A -- There are several things you should know about. I took an oath, under the penalty of death, that no matter what I saw or heard I would never divulge the information. Also, I signed a waiver that states I would willingly give up my life if I was found guilty of

The Bigfoot Paradox 2: What Do They Already Know?  
Just the Facts? Race and the PSU Sex Scandal -- Sn...  
The Fed's War Against Bloggers  
Thanks For Supporting 'Phantoms and Monsters'  
Possible Juvenile Bigfoot Sightings - Lackawanna C...  
Just the Facts? Man Dies in Haunted Apartment -- A...

---

---

[Ghost Pictures](#)

---





'treason'.

At the Dulce Base treason is "ANYTHING that mentions the details of daily operations at this facility, when outside the confinement of the this base." When I first arrived, a "need to know" policy was in effect. The story the 'honchos' told us was that "this is a Tri-Biotransfer Facility with Advanced Technology, doing advanced adventurous methodology for medical and mental gains."

Which is a fancy way of saying they do really risky things with human life just to see what would happen. If a medical cure happens, it will be heralded on the surface of the earth as a marvelous new cure, saying it was found after years of research at some well known medical lab. The real story of the cure is never explained.

After all, the Dulce Base IS A SECRET FACILITY! These people are very good at what they do. They do not tell the truth about the unfortunate people that end up in "Nightmare Hall." I worked with aliens. With that in mind, you should get the idea of the secrecy and the security at that place.

Yes, I know this was not the usual hospital type job site, but in the beginning I 'bought' the whole package. I was reminded daily by intercom, in the elevators, that "this site does high risk advanced medical and drug testing to cure insanity, please, never speak to the inmates, it can destroy years of work." I'm sensible, when doctors say don't speak to them, who was I to destroy the delicate situation?

But one man some how caught my eye. He repeatedly stated that he was George S---- and that he had been kidnapped and he was sure someone was searching for him. I don't know why he sticks in my mind, I found I was remembering his face, thinking he sure didn't look or sound insane, but many inmates said that. The next weekend I convinced a friend of mine, a cop, to run a check on the guy, saying I had a run in with him and was curious.

I didn't mention the base at all. It was a sickening feeling when the computer confirmed that George S. was missing. What's worse, the cops thought he was just another guy that got tired of the daily grind and split. That was the beginning. Am I the one that blew the whistle? No. The next Monday, I searched for George, but he was gone.

There were no records that explained what happened to him. It was

another security officer that came to me saying he and some lab workers wanted an off duty meeting at one of the tunnels, [off the record]. Curiosity took over and I said OK. That night, about nine men showed up. They said they knew they were risking me turning them in but they wanted to show me some things they thought I should see. One by one they showed records that proved many inmates were missing people.

There were newspaper clippings, and even photos that they had some how smuggled into the base. They hoped to smuggle them back out, without me turning them in to the honchos. I could see the fear in their faces as they spoke. One man stated he would rather lose his life by trying, than to lose his soul by not doing anything at all. It was that remark that turned the tide. I told them about George and the things I found out about him. After a few hours we pledged to attempt to expose the Dulce Base.

Q -- The name Nightmare Hall is descriptive, but surely there was a 'regular' name, what was it called in the manuals?

A -- In the manuals it was called "The Vivarium". It describes Dulce Base as a "secured facility for tending bio-forms of all types." In their report it is retold as "a private subterranean bio-terminal park, with accommodations for animals, fish, fowl, reptile, and mankind." After SEEING this 'park' the name Nightmare Hall is far more accurate than the manual. The 'accommodations' for the inmates at Nightmare Hall fall short of the pretty picture the manual describes.

Q -- You mentioned one reptilian leader, Khaarshfashst, do you know any thing about him, like where is he from? Is he from Earth or some other planet?

A -- His name means "keeper of the laws". They receive their name after they reach the "age of awareness". They do not recognize time as an important factor in "being aware" the way humans do. Upon their "age of awareness" they are cognitive of the station or position they are destined to fulfill. At that time they chose or allow someone to choose their name.

Their name will include the position they hold and several personally chosen letters. Each letter has a personal meaning, known only to the alien and the one that chose their name. Since Karsh's name means keeper of the laws his name includes kaash [memory or keep, base word for 'Akashic' record] and fashst [law, base word fast or bind]. Reptilians choose to be not only private but secretive of the location of their natal place. To them birth, or emergence of

life, is considered as one of the sacred rites of life.

They consider Earth or Terra their "home planet", but several reptoids discuss several star maps. Most of those stars were within the Milky Way. Within those star maps lies the stars and planets of the Planets of the Allegiance.

Earth being one of the planets in their trade routes. If any human asked clear questions about the Allegiance, the Aliens referred the questions to the Draco. The Draco in turn, referred the questions to their supervisor [me]. I did not have that information about the stars, because information was supplied on a "need to know" basis. I didn't 'need' that information.

Q -- Did any of the working caste join in the revolt? Could you give me some names?

A -- A few of the reptilian janitorial crew let us know that THEY knew WE were attempting to sabotage the work going on in the sixth and seventh levels. One of them, with the name Schhaal, secretly formed a small group of reptoids with the same mind set as my group.

Sshhaal took upon himself the danger of informing me. He was as open as is possible in a unique situation. On the day I found out about it, I was inspecting a camera near an exit tunnel.

He approached, stooped down (the tall reptiloids average about 7-8 ft. in height according to most witnesses - Branton), seemingly scraping some non-existent dirt, and he quietly said, *"A few of us agreed that you are singular in your interest in missing-human reports. If true, walk away. I'll reach you. If it's untrue, destroy my life now!"*

My heart almost leaped out of my chest, but I silently walked toward one of the wide halls.

For the rest of my life I'll remember those words! It was the first time I KNEW reptilians could have individual thoughts and opinions! Basically, they formed a uniform front with a small variety of interests. Or at least, that was what we had thought. It was a couple days before I heard from him again. As he walked beside me in the sixth level's infamous hall, I heard him say "Enter the exit tunnel on the sixth level, north, after your shift."

The next few hours were long and filled with thoughts of betrayal,

or worse, but I shouldn't have worried. I contacted one of the original nine [resistance] men, and let him know, just in case. Gordon wanted to go with me, but I convinced him to wait a few feet from the exit and pretend he was having trouble with his cart [electric, like a golf cart]. When I got there, there were three of them.

SSHHAAL formerly introduced FAHSSHAA and HUAMSSHAA [name base word is SSHHAA or assist]. With that, I quickly grabbed Gordon from the hall and the five of us talked and walked in the dark tunnels about three hours. After that day, the joined resistance group got bigger and bolder. Ultimately, it ended when a military assault was initiated via the exit tunnels and they executed anybody on their list, human or reptilian.

We fought back, but none of the working caste had weapons, nor did the human lab workers. Only the security force and a few computer workers had flash guns. It was a massacre. Every one was screaming and running for cover. The halls and tunnels were filled as full as possible.

We believe it was the Delta Force [because of the uniforms and the method they used] that chose to hit at shift change, an effort that killed as many as named on their list.

We, to this day, do not know who BETRAYED us. Gordon Ennery ran beside me as we ran into the third level exit tunnels, and he died when several bullets slammed into his back. I vaporized that assassin and kept running. And I'm still running. Gordon will be remembered.

**The 2nd half of the Castello's statement will be posted on Monday (11/21)**

**NOTE: You may want to refer to this earlier post - Dulce Base: What Are We Seeing?...Lon**

*The Dulce Wars: Underground Alien Bases and the Battle for Planet Earth*

*Exposing U.S. Government Policies On Extraterrestrial Life: The Challenge Of Exopolitics*

*Underwater and Underground Bases*

*Underground Alien Bio Lab At Dulce: The Bennewitz UFO Papers*





### **The Archuleta Mesa in northern New Mexico**

Labels: alien technology, aliens, archuleta mesa, Dulce Base, government, greys, human experiments, humanoid, military, reptilians, underground bases

0

### **Looking For A Great Gift Idea?**



**Have you had a close encounter or witnessed something unusual? Send us an email**

[Donate](#)

**Please help support  
'Phantoms and Monsters'  
Thanks!**

Email this • Share on Facebook • Stumble It! (1 Reviews) • •

Technorati Links • Digg This! • Tumblr This • Reddit This • Fark It •

Save to del.icio.us



---

[Youtube Videos](#)

[Government Grants](#)

[Phantoms](#)

---

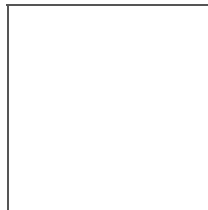
### You might also like:



1947: The Year of the Crash - Part 1



'...and that's all I have to say about that'



1947: The Year of the Crash - Part 2

LinkWithin

POSTED BY LON AT 2:36 PM



Tag Cloud

Government Grants Medical Insurance  
Psychic Reading Youtube Videos

### 2 COMMENTS:

 Kandinsky said...

Castello, if he existed, claimed clearances that did not exist. For example, 'Ultra' was used in WW2 by the British and wasn't used by the US at all. Castello has added spice to the account by not just inventing an impressive clearance designation, but going even further and making it extra-special, super secret - Ultra Level 7! Umbra pipped even that. :)

When these tales really gained traction, it was in a small pool of communication between members of the Paranet BBS. The stories sloshed around at a time when there was no great search engines,

wikipedias or ways to check/disprove them.

Now we know that his claims of 'wolfram-graphite tipped drill cones' were made-up. We also know that even 'nuclear-powered' drills can't disintegrate matter. 'Most of the Native Americans' do not 'know' of the base and aren't on the interwebs talking about alien critters.

For a guy who claimed he was there to maintain the CCTV of one area of one alleged facility, why would he know all the rest? He has chapter and verse of all the critters on Earth, US secret bases and what the aliens are up to. He even speaks 'Draconian' and knows the etymology of 'Khaarshfashst's' name!

7:22 AM

 Kandinsky said...

I was going to delete the comment and can't. It was unnecessary and not really fair when you've got a part two to post.

If you choose to remove it, you have my agreement.

2:13 PM

POST A COMMENT

LINKS TO THIS POST:

CREATE A LINK

<< Home

#### PREVIOUS POSTS

- Just the Facts? Scientists Claim Alien Mummy in Pe...
  - The Travis Walton Abduction: I Still Have Doubts
- Just the Facts? Natalie Wood's Death Case Reopened...
  - The Old Man's Ring
- The Bigfoot Paradox 2: What Do They Already Know?
- Just the Facts? Race and the PSU Sex Scandal -- Sn...
  - The Fed's War Against Bloggers
  - Thanks For Supporting 'Phantoms and Monsters'
- Possible Juvenile Bigfoot Sightings - Lackawanna C...
- Just the Facts? Man Dies in Haunted Apartment -- A...



## The Hunger Games Store

[Shop now](#)

Illustration © 2008 Scholastic Inc. from *THE HUNGER GAMES* written by Suzanne Collins. Privacy

**Have you had a close encounter or witnessed something unusual?**

Send us an email



This site is licensed under a Creative Commons Attribution-Noncommercial-No Derivative Works 3.0 United States License.


Hotlinking of P&M Network images and copyrighted material is strictly forbidden unless permission is obtained.


'Phantoms and Monsters' is protected under the Lanham (Trademark) Act (Title 15, Chapter 22 of the United States Code)



**SUNDAY NIGHTS** 8:00 - 10:00 PM EST  
[www.beyondtheedgeradio.com](http://www.beyondtheedgeradio.com)

**Shop from over**  
700+ million products or create your own



[SHOP NOW](#) 

# HAUNTED EARTH

Paranormal Video  
Investigations



Where the stars *sign*

[CLICK HERE](#)

**Strickler's**  
CELEBRITY AUTOGRAPHS





**Hot Girls In  
Yoga Pants**



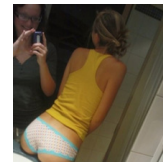
**75 Hottest  
Beach Babes**



**10 Topless  
Moments On  
Adult Swim**



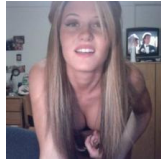
**Most  
Unbelievable  
Bums**



**Inappropriate  
Mother-  
Daughter  
Bonding**



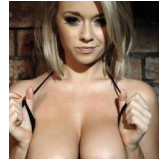
**23 Tantalising  
Nude Scenes**



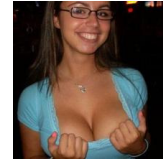
**Freshman  
Uploads  
Naughty  
Pictures**



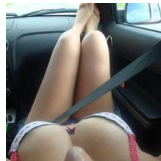
**Harry Potter  
Actors Then  
And Now**



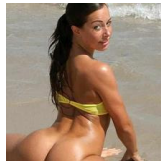
**Embarrassing  
Beach Photos**



**Amazing  
Geeky Girls  
In Glasses**



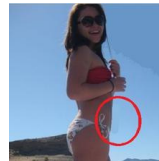
**Sexy POV  
Pics**



**50 Hot  
Clothing  
Accidents**



**Very Lucky  
Cat Pics**



**WTF  
Photographed  
Girls**



**6 Reasons To  
Date A Fat Girl**



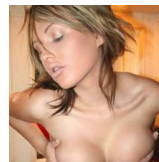
**Lusciously Hot  
Bums**



**The Anatomy  
Of Attraction  
Quiz**



**Fantasy Vs  
Reality**



**Embarrassing  
Beach  
Pictures**



**Kitty Fails To  
See The  
Resemblance**

\* \* \* \* \*

**'Phantoms and Monsters' is protected under the Lanham (Trademark) Act (Title 15, Chapter 22 of the United States Code)**

#### Disclaimer:

The publication of any and all content e.g., articles, reports, editorials, commentary, opinions, as well as graphics and or images on this web-site does not constitute sanction or acquiescence of said content unless specified; it is solely for informational purposes.

#### Fair Use Notice:

This site may contain copyrighted material the use of which may not be specifically authorized by the copyright owner. We are making such material available in our efforts to advance understanding of environmental, political, human rights, economic, democratic, scientific, social justice, and religious issues, etc. We believe this constitutes a 'fair use' of any such copyrighted material as provided for in section 107 of the US Copyright Law. In accordance with Title 17 U.S.C. Section 107, the material on this site is distributed without profit to those who have expressed a prior interest in receiving the included information for research and educational purposes.

You understand that all Content posted on, transmitted through, or linked from the Phantoms and Monsters Site, are the sole responsibility of the person from whom such Content originated. You are responsible for all Content that you post, email or otherwise make available via the Phantoms and Monsters Site. Phantoms and Monsters does not control, and is not responsible for Content made available through the Phantoms and Monsters Site. By using the Phantoms and Monsters Site, you acknowledge that you may be exposed to

Content from other users that is offensive, indecent, inaccurate, misleading, or otherwise objectionable.

[Report Abuse](#) [Next Blog»](#)

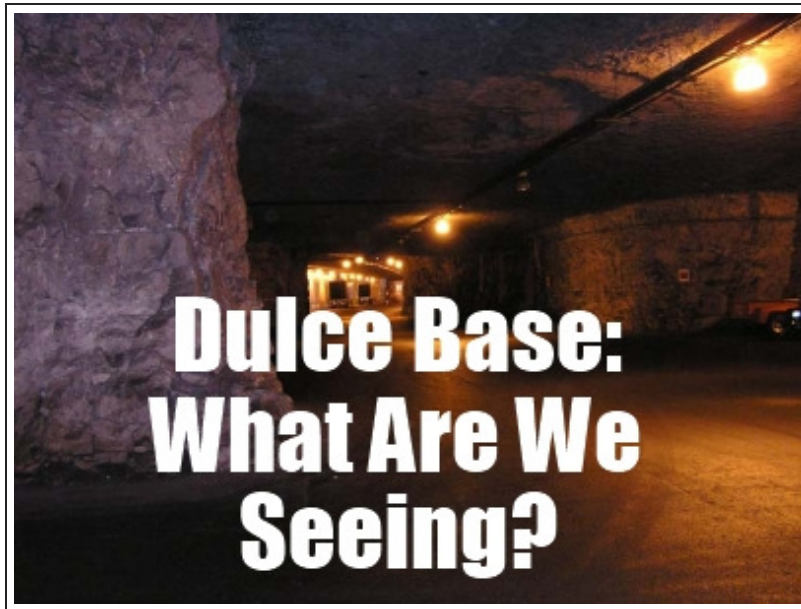
[Create Blog](#) [Sign In](#)



A DAILY DOSE OF PARANORMAL PHENOMENA, CRYPTIDS, UFOS, ULTRATERRESTRIALS,  
MULTIDIMENSIONAL BEINGS, CONSPIRACIES AND ALTERNATIVE NEWS

MONDAY, AUGUST 08, 2011

## Dulce Base: What Are We Seeing?



During the past several months, I have accorded some attention to several unexplained livestock attacks and cryptid [sightings](#) on the Dine Navajo lands in the Four Corners region...in particular, those areas in northwest New Mexico. Many of these attacks were, most likely, the result of Bigfoot-type hominids that are regularly seen in this area. Other attacks have a more bizarre angle, especially when the tracks of the perpetrator are of an unfamiliar genus and / or suddenly end in mid-stride as well as animal carcasses drained of blood and not fed upon.

The Archuleta Mesa area near Dulce, New Mexico has long been rumored to hold a joint government-alien biogenetic laboratory

**Subscribe now! Enter your email address and grab your free daily dose of *Phantoms and Monsters***  
**You will only receive one email per day**

Delivered by FeedBurner

**Have you had a close encounter or witnessed something unusual?**  
Send us an email

\*\*\*\*\*

Search the  
***Phantoms & Monsters***  
Archives

site search by freefind

\*\*\*\*\*

**Join Eric & Lon  
LIVE  
Sunday 8PM ET/ 7PM CT**

designed to carry out bizarre experiments on humans and animals. It has also been said that the lower levels of this underground system stretches between Dulce and Los Alamos some 90 miles to the south-east. Because of the proximity of these facilities to the Dine Navajo lands, is it possible that these attacks are of unknown experimental beings that have either escaped from the facility or have been released in order to be scientifically monitored?

It may seem to be a far-fetched hypothesis...unless, of [course](#), you are the victim of the attacks and have no idea of what you're dealing with. The following narratives may temper your resolve or offer some curiosity to the question.

### **In March 2011 I received the following email:**

*Lon, I read the letter you posted recently about the Dulce Labs genetics experiments and wanted to share my experiences with your readers. When I was an undergraduate studying genetics in the mid-1970s, I did a 10-month internship at Dulce Labs. My primary duties were on level 1, that is where I spent almost all of my time. But once a week I accompanied one of the junior researchers to levels 5, 6, and 7 to collect data tapes and other documentation. I never got past the "clear zone" on those levels, but on a couple occasions I heard inhuman shrieks and wailing noises on level 6. I was told that level 6 was a psychiatric facility for especially disturbed [patients](#), and that they were known to have emotional outbursts.*

*On one occasion while we were waiting for someone to bring out the tapes, I heard part of a message come through the intercom, and the words are burned into my memory.*

**VOICE 1: "CELL 34 COMPROMISED, ENTITY HAS BREACHED CONTAINMENT"**

*After a pause a second voice came over the speaker:*

**VOICE 2: "AVAILABLE PERSONAL [REPORT](#) TO THE BLUE ZONE FOR C&C. MAXIMUM FORCE AUTHORIZED."**

*The guard at the desk told me and my colleague that we had to leave immediately, we were rushed back into the elevator before the materials were delivered to us. It was two days before they let us go pick up the tapes, and when we went that time, everything was normal. Nobody ever talked about it. I tried to ask my colleague, the junior researcher who was there at the time, about it, but he said he didn't know what I was talking about, and something*



**In-depth alternative  
talk radio**





*in his tone told me I'd better forget about it too.*

*After I graduated I was interested in returning to Dulce because I was really excited about the potential for genetic science, and Dulce had some very advanced equipment and knowledge - better than anything being used anywhere else. But I was told that there weren't any openings. I wondered if I was being blown off because of my curiosity about that event, if I was considered a risk. I tried contacting the junior researcher, but never got a response from him. - MP*

### The above anecdote was in response to this posted email:

Sir, first off, if you want the full story let me know. But this will explain how Mothman came about. U.S. Energy Secretary John Herrington named the Lawrence Berkeley Laboratory and New Mexico's Los Alamos National Laboratory to house advanced genetic research centers as part of a project to decipher the human genome. The genome holds the genetically coded instructions that guide the transformation of a single cell, a fertilized egg, into a biological organism.

*"The Human Genome Project may well have the greatest direct impact on humanity of any scientific initiative before us today", said David Shirley, Director of the Berkeley Laboratory. Covertly, this research has been going on for years at the Dulce bio-genetics labs. Level 6 is hauntingly known by employees as "Nightmare Hall". It holds the genetic labs at Dulce. Reports from workers who have seen bizarre experimentation, are as follows:*

*"I have seen multi-legged 'humans' that look like half-human/half-octopus. Also reptilian-humans, and furry creatures that have hands like humans and cries like a baby, it mimics human words... also huge mixture of lizard-humans in cages. There are fish, seals, birds and mice that can barely be considered those species. There are several cages (and vats) of winged-humanoids, grotesque bat-like creatures...but 3 1/2 to 7 feet tall. Gargoyle-like beings and Draco-Reptoids."*

*"Level 7 is worse, row after row of thousands of humans and human mixtures in cold storage. Here too are embryo storage vats of humanoids in various stages of development. I frequently encountered humans in cages, usually dazed or drugged, but sometimes they cried and begged for help. We were told they were hopelessly insane, and involved in high risk drug tests to cure insanity. We were told to never try to speak to them at all. At the*

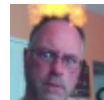
### Find us on Facebook



### Phantoms and Monsters

Like

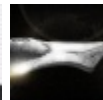
3,403 people like **Phantoms and Monsters**.



Brad



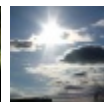
Dale



Kumarar



Steve



Jennie



Clint



Angel



Robin



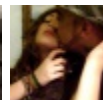
Montana



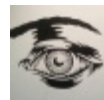
Paul



Von



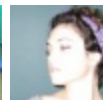
Jamil



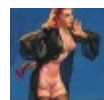
Otto



Ken



Lauren

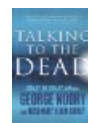


Facebook social plugin

### Great Titles!



Monsters of West Virgi...  
Rosemary Ell...  
**\$10.04**



Talking to the Dead  
George Noor...  
**\$16.93**



The Vengeful Djinn: Unv...  
Rosemary Ell...  
**\$13.19**

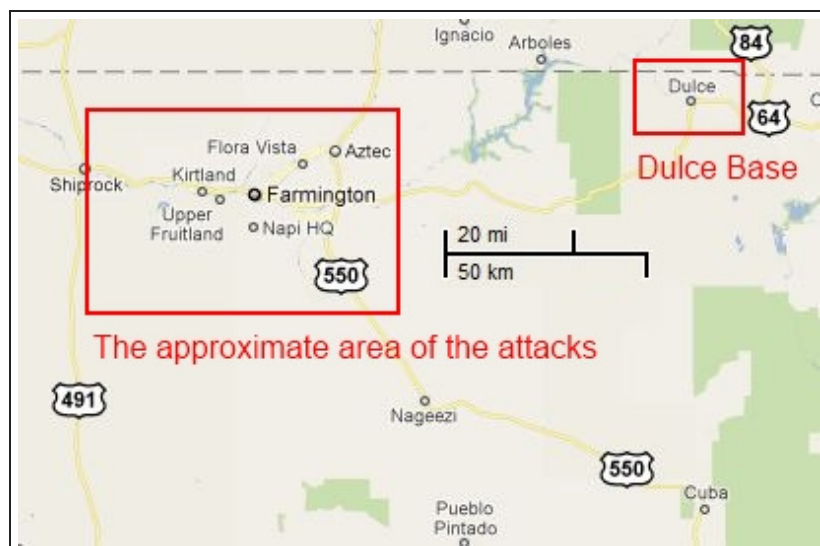


Witches and Wiccans (...  
Rosemary Ell...  
**\$10.95**

The  
Encyclopedi...

*beginning we believed that story. Finally in 1978 a small group of workers discovered the truth. It began the Dulce Wars".*

When the truth was evident that humans were being produced from abducted females, impregnated against their will, a secret resistance group formed. This did little though. Over time they were assassinated or "died under mysterious circumstances".



### The witness also supplied the following information:

An underground Military Base/Laboratory in Dulce, New Mexico connects with the underground [network](#) of tunnels which honeycombs our planet, and the lower levels of this base are allegedly under the control of Inner Earth beings or Aliens. This base is connected to Los Alamos research facilities via an underground "tube-shuttle." (It can be assumed that such a shuttle way would be a straight-line construction. It should then be possible, by using maps and some deduction, to determine the most likely location of this base, especially since [the general](#) location is already known.) Beginning in 1947, a road was built near the Dulce Base, under the cover of a lumber company. No lumber was ever hauled, and the road was later destroyed. Navajo Dam is the Dulce Base's main source of power, though a second source is in El Vado (which is also another entrance). Most of the lakes near Dulce were made via [government grants](#) "for" the Indians.

### Dulce Base - The Central Hub

-1st Level - contains the garage for Street Maintenance.

-2nd Level- contains the garage for trains, shuttles, tunnel-boring



Rosemary Ell...  
\$15.99



The Encycl  
opedia...  
Rosemary Ell...  
\$16.47



Fairies  
(Mysteries,...  
Rosemary Ell...  
\$10.95



Get Widget

Privacy



**Phantoms and Monsters**  
Now Available on  
**Kindle**  
**CLICK HERE**



Lon Strickler  
**PhantomMonster**

**PhantomMonster** Paranormal  
Theories, Thoughts and  
Recollections: The following  
articles and anecdotes were...  
[goo.gl/fb/2JFhv](http://goo.gl/fb/2JFhv)  
5 hours ago · reply · retweet · favorite

**PhantomMonster** Paranormal  
Theories, Thoughts and  
Recollections [nblo.gs/zXabI](http://nblo.gs/zXabI)  
5 hours ago · reply · retweet · favorite

machines and UFO maintenance.

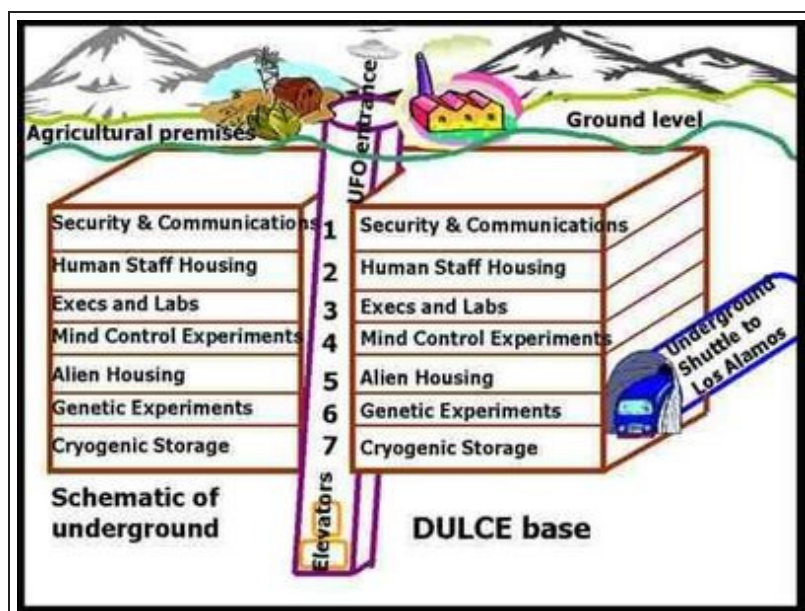
-3rd Level - the first 3 levels contain government [offices](#).

-4th Level - Human Aura Research as well as aspects of Dream Manipulation, Hypnosis, and Telepathy. They can lower your heartbeat with Delta Waves and introduce data and programmed reactions into your mind (for those implanted with brain chips). Most people already are, they just don't know it.

-5th Level - witnesses have described huge vats with amber liquid with parts of human bodies being stirred inside. Rows and rows of cages holding men, women and children to be used as food. Perhaps thousands.

-6th Level - privately called "Nightmare Hall." It contains the genetic labs. Here are where the crossbreeding experiments of human/animal are done on fish, seals, birds, and [mice](#) that are vastly altered from their original forms. There are multi-armed and multi-legged humans and several cages and vats of humanoid bat-like creatures up to 7 feet tall.

-7th Level - Row after row of 1,000s of humans in cold storage including children.



-----

It is alleged that Los Alamos and the mountainous regions east and southeast of it in and around the Santa Fe National Forest are the major holding area of earth based extraterrestrial (interterrestrial)

PhantomMonster I added @edshow as one of my influencers on @klout. Who influences you? [klout.com/user/PhantomMo...](http://klout.com/user/PhantomMo...)  
6 hours ago · reply · retweet · favorite

PhantomMonster I gave @moongarden1971 +K about Social Media on @klout. [klout.com/plusk/gave/855...](http://klout.com/plusk/gave/855...)  
6 hours ago · reply · retweet · favorite

PhantomMonster I gave Anna Lisa Dominguez-Gutierrez +K about Paranormal Activity on @klout. [klout.com/plusk/gave/855...](http://klout.com/plusk/gave/855...)  
6 hours ago · reply · retweet · favorite

PhantomMonster I added @TheCryptoCrew as one of my influencers on @klout. Who influences you? [klout.com/user/PhantomMo...](http://klout.com/user/PhantomMo...)  
9 hours ago · reply · retweet · favorite



Join the conversation

[Silent Invasion](#)  
Stan Gordon, Roger...

Buy New \$14.73

Buy from [amazon.com](#)

[Privacy Information](#)

[Donate](#)

**Support  
'Phantoms and Monsters'  
Thanks!**

7218 readers  
BY FEEDBURNER



FAVE THIS BLOG  
TECHNORATI

WE ARE LISTED AT..  
Top Paranormal Sites



beings in North America, although there are a number of smaller habitation locations scattered throughout the underground networks between Dulce and Area 51. 'Dulce Base' is said to hold the second largest repository of extraterrestrials and equipment in North America. None of this information takes into account what resources other nations and governments possess. All the evidence I have received is anecdotal but, in my opinion, the sources are reliable. You can find more at Dulce Conference Ends / The Dulce Report, What Really Happened in the 1979 Dulce Firefight? and Blue Planet Project - The Dulce Base.

-----



**Archuleta Mesa**

**In May 2010, through the MUFON CMS, a Jicarilla Apache tribal police officer recalled an alien encounter he had in Dulce, New Mexico (unedited):**

*Mid 80's Dulce, NM my self a law enforcement officer w/Jicarilla Apache Police. Background Police Science/Forensic Western NM Univ., Silver City. Had gone to graveyard shift at midnight w/ another officer and dispatcher. Immediately went to a single females home with the other shift and was informed that a small being was in her house at the foot of the bed with a box shining a laser like red light at her, the other officers knowing it was there shift change left without further investigation. Making fun mind you. She was obviously shaken up and I did notice some electrical malfunctions within her home and her animals, dogs and horses were uneasy. Throughout the night I continued to check on her, once in the early morning I was called to her home, her house was dark and as I entered I could hear her down the hall crying for help.*





*I was informed again of visitors with a light in her home and it seemed strangely quiet. No one to be found in the home or area. In the early morning when the sun comes up when their is light I drove up to the home to make a check I noticed some movement in the brush and trees just west of her home about 15 yards away. I still don't understand what I may have saw, but soon after as I was stepping out of my unit three oval craft in a triangular pattern about the size of a three bedroom home lifted off from behind some juniper trees just 30 yards at the most taking off silently without noise/down drafts, then turn a bright white light and slow went in the direction east towards Chama, NM slowly gain altitude. My other Officer and Dispatcher was witness to this also. Shortly after I heard on the State Police Frequency from Chama about those UFO.s that were being called in to them. I felt completely helpless as a Officer to help someone who asked for help and was unable to assist and protect her in her time of need. It still bothers me today. S/GJ. (I spoke with Norio in Dulce, NM during the Dulce Base Conference also.)*

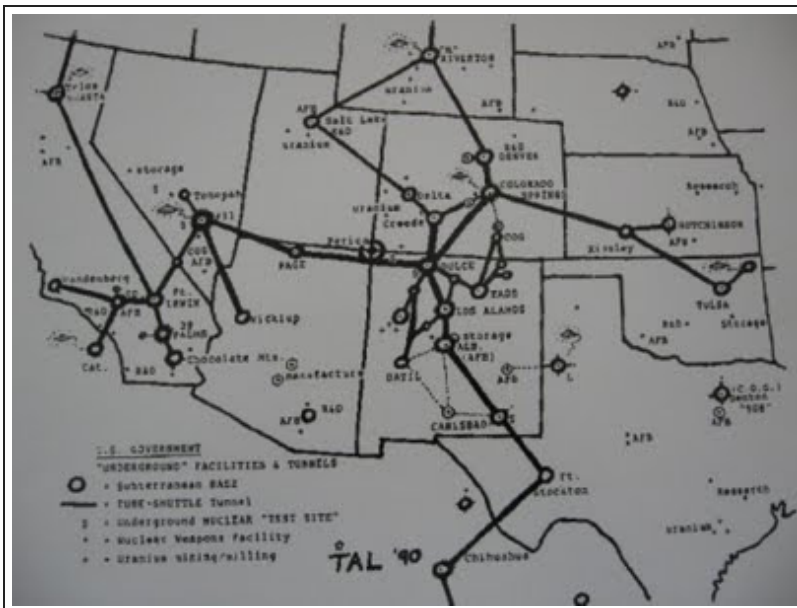
-----



**HUGE  
Music & Movie  
Selection!**



Follow this blog



**A map of the alleged underground connections emanating from Dulce Base**

**The original sources to activity at the Dulce underground Military Base/Laboratory are as follows:**

### **Thomas Edwin Castello**

Thomas Edwin Castello claimed to be a former security technician, employed by the Rand Corporation, at the Dulce underground facility. However, Castello has only provided stories, nothing solid,

**Have you had a close encounter or witnessed something unusual?**

Send us an email

### **PREVIOUS POSTS**

Just the Facts? - Jackie O Tapes, 'False Flag' Ali...

Recalling the Clarence Bigfoot Hoopla

Esoterica: Ozark Ghost Photo, Djinn Attack Saudi M...

Bloodless Carnage: Livestock

and has yet to come forward in person. There is some doubt as to whether he actually exists. He allegedly stole a set of controversial papers called the "Dulce Papers," along with over 30 black and white photos and a video tape.

Castello reported that the Dows [Greys], the Dracos [Reptiloids], and the Ciakars are working there hand in hand with over 18,000 short "greys" living the Dulce Facility. A colleague had come face-to-face with a 6-foot tall Reptoid which had materialized in his house. The Reptoid showed an interest in research maps of New Mexico and Colorado which were on the wall. The maps were full of colored push-pins and markers to indicate sites of animal mutilations, caverns, locations of high UFO activity, repeated flight paths, abduction sites, ancient ruins, and suspected alien underground bases.

The multi-level facility at Dulce is reported to have a central HUB which is controlled by base security. The security level goes up as one descends to lower levels. Thomas had an ULTRA-7 clearance. He knew of seven sub-levels, but there may have been more. Most of the aliens supposedly are on levels 5, 6 and 7 with alien housing on level 5. The only sign in English was over the tube shuttle station hallway which read "to Los Alamos."

There appears to be a vast network of tube shuttle connections under the U.S. which extends into a global system of tunnels and sub-cities. Connections go from Dulce to the Page, Arizona facility, then onto an underground base below Area 51 in Nevada. Tube shuttles go to and from Dulce to facilities below Taos, N.M.; Datil, N.M.; Colorado Springs, Colorado; Creed, Colorado; Sandia' then on to Carlsbad, New Mexico.

At the Dulce Base, most signs on doors and hallways are in the alien symbol language and a universal symbol system understood by humans and aliens. Thomas stated that after the second level, everyone is weighed in the nude, then given a uniform. Visitors are given off-white uniforms; jump suits with a zipper. The weight of the person is put on a computer I.D. card each day. Any change in weight is noted; if over three pounds, a physical exam and X-ray is required.

Scales are located in front of all sensitive areas and are built into the floor near doorways and the door control panels. An individual places his computer I.D. card into the door slot, then enters a numerical code onto a keypad. The person's weight and code must match the card or the door will not open. Any discrepancy will

[Attacks Continue in t...](#)

[Just the Facts? - NJ Bigfoot Sightings Increase, B...](#)

[Roadkill Creature Still Mystery After DNR Examinat...](#)

[Admiral Byrd's Most Excellent Adventure](#)

[Just the Facts? - Northern Territory UFO, Reward F...](#)

[This Week On 'Beyond the Edge' Radio - Author / Le...](#)

[Strange Orange Substance Washes Ashore at Kivalina...](#)

---

[Ghost Pictures](#)

---



summon security. No one is allowed to carry anything into sensitive areas. All supplies are put on a conveyor belt and X-rayed. The same method is used in leaving sensitive areas.

All elevators are controlled magnetically; there are no elevator cables. The magnetic system is inside the walls of the elevator shaft, there are no normal electrical controls. Everything is controlled by advanced magnetics, including lighting. There are no regular light bulbs and the tunnels are illuminated by phosphorous units with broad structureless emission bands. Some deep tunnels use a form of phosphorous pentoxide to temporarily illuminate areas. The aliens won't go near these areas for reasons unknown.

Level 1 contains the garage for street maintenance. Level 2 contains the garage for trains, shuttles, tunnel-boring machines and disc maintenance. The studies on Level 4 include human-aura research, as well as all aspects of telepathy, hypnosis, and dreams. Thomas says that they know how to separate the bioplasmic body from the physical body to place an "alien entity" life-force-matrix within a human body after removing the "soul" lifeforce-matrix of the human.

Level 6 is privately called "Nightmare Hall." It holds the genetic labs, where experiments are done on fish, seals, birds, and mice that are vastly altered from their original form. There are multi-armed and multi-legged humans and several cages (and vats) of humanoid bat-like creatures as tall as 7-feet. The aliens have taught the humans a lot about genetics; things both useful and dangerous.

At Level 7, Thomas encountered humans in cages. Row after row of thousands of humans, human-mixture remains, and embryos of humanoids were kept in cold storage. He says, "I frequently encountered humans in cages, usually dazed or drugged, but sometimes they cried and begged for help. We were told they were hopelessly insane, and involved in high-risk drug tests to cure insanity. We were told to never speak to them at all. At the beginning we believed that story. Finally in 1978 a small group of workers discovered the truth. That began the Dulce wars."

The Grey and reptoid species are highly analytical and technologically oriented. They have had ancient conflicts with the Nordic humans from other space societies, and may be staging here for a future conflict. Intensely into computing and bio- engineering sciences, they are led to doing reckless experiments without regard for what we consider to be ethical and empathetic conduct toward

other living creatures.

Principal government organizations involved in mapping human genetics, the so-called genome projects, are within the Department of Energy (which has a heavy presence on the Nevada Test Site); the National Institute of Health; the National Science Foundation; the Howard Hughes Medical Institute; and, of course, the Dulce Underground Labs which are run by the DOE. Thomas had revealed that the chief of the genetic experiments for Los Alamos and Dulce is Larry Deaven.

According to Thomas, the alien androgynal breeder is capable of parthenogenesis. At Dulce, the common form of reproduction is by polyembryony. Each embryo can, and does divide into 6 to 9 individual "cunne" (pronounced cooney, i.e. siblings). The needed nutriment for the developing cunne is supplied by the "formula," which usually consist of plasma, deoxyhemoglobin, albumin, lysozyme, cation, amniotic fluid and more. The term "genome" is used to describe the totality of the chromosomes unique to a particular organism (or any cell within an organism), as distinct from the genotype, which is the information contained within those chromosomes. The human genes are mapped to specific chromosomal locations. This is an ambitious project that will take years and a lot of computer power to accomplish.

Thomas also says the aliens don't want the land, the gold, the minerals, or water that we possess, nor even the human or animal life. What they do want is magnetic power that surges on and through the Earth. The aliens harvest this magic power in a way unknown to us. Thomas says the aliens recognize this power as more valuable than any other commodity on our globe.

### **Paul Bennewitz**

Paul Bennewitz, a physicist in Albuquerque and a UFO researcher affiliated with APRO (Aerial Phenomena Research Organization), traveled to Dulce in 1977 to investigate reports of cattle being mutilated on the ranch of Edmound Gomez. He became friends with the local law enforcement official in the area of the Jicarilla Indian Reservation, Gabe Valdez, and the two investigated the mutilations and also some mysterious lights reportedly seen over Archuleta Mesa. Two gentlemen named Howard Burgess and John F. Gille (Jean Francois Gille), also seem to have been involved in these investigations.



Bennewitz along with Dr. Leo Sprinkle then studied the case of Myrna Hansen who said under hypnosis that she had been abducted by the aliens and taken to a secret underground base where they saw the cattle being mutilated and drained of their blood and vats containing human body parts. Implants were placed in the bodies of her and her son and that the aliens could control their minds through these devices.

Bennewitz began filming the strange lights he was seeing over Manzano. He also built a complex electronic surveillance equipment network to receive low-frequency electromagnetic transmissions that he believed came from the alien craft. Bennewitz had several contacts with Air Force Officials that he tried to warn about the threat represented by aliens against the Manzano Weapons Storage Area.

The year after, Bennewitz wrote a computer program that he claimed could translate the alien radio transmissions. He now came to believe that he was intercepting the messages that the aliens were transmitting to mind-control devices such as those that Myrna Hansen claimed had been placed in her and her son.

During this period, 1980 to 1987, Bennewitz was visited by many other UFO researchers, including John Lear and Linda Moulton Howe. In 1987, another abductee named Christa Tilton, added to the tales of underground bases and aliens and vats with human body parts in them.

Bennewitz told Thomas Moore, the famous ufologist, that the alien transmissions he had received indicated that the grays, who he said were responsible for cattle mutilations and the abductions of humans, were building a secret underground base beneath Archuleta Peak on the Jicarillo Indian Reservation near Dulce, New Mexico with the help of the US Government.

When he said in a final burst of paranoia that aliens were coming through the wall of his house to inject him chemicals, it was time to send him to the Hospital. The story says that he has recovered but refuse to deal with the subject of UFOs.

## **Phil Schneider**

Phil Schneider was an engineer who claimed to have discovered the alien base accidentally. Schneider is said to have committed suicide, but others claim he was found with either (1) piano wire, or (2) rubber catheter hose, wrapped around his throat, which indicate

that he was murdered, ostensibly to silence him. Some sources say, however, that Schneider both had severe brain damage and was also a paranoid schizophrenic, which makes his stories about Dulce somewhat questionable.

"Back in 1954, under the Eisenhower administration, the federal government decided to circumvent the Constitution of the United States and form a treaty with alien entities. It was called the 1954 Greada Treaty, which basically made the agreement that the aliens involved could take a few cows and test their implanting techniques on a few human beings, but that they had to give details about the people involved. Slowly, the aliens altered the bargain until they decided they wouldn't abide by it at all. Back in 1979, this was the reality, and the fire-fight at Dulce occurred quite by accident.

I was involved in building an addition to the deep underground military base at Dulce, which is probably the deepest base. It goes down seven levels and over 2.5 miles deep. At that particular time, we had drilled four distinct holes in the desert, and we were going to link them together and blow out large sections at a time. My job was to go down the holes and check the rock samples, and recommend the explosive to deal with the particular rock. As I was headed down there, we found ourselves amidst a large cavern that was full of outer-space aliens, otherwise known as large Greys. I shot two of them. At that time, there were 30 people down there. About 40 more came down after this started, and all of them got killed. We had surprised a whole underground base of existing aliens. Later, we found out that they had been living on our planet for a long time, perhaps a million years. This could explain a lot of what is behind the theory of ancient astronauts."

**NOTE: there are other links from past posts that may be of interest - UFO Witnesses - Sandia Mountains, New Mexico and The Reptilian Files. So, I ask again...is it possible that these attacks on the Dine Navajo lands are of unknown experimental beings that have either escaped from the facility or have been released in order to be scientifically monitored? Lon**

*Sources:*

*PhantomsandMonsters.com*

*aliens.monstrous.com*

*theonlinemail.co.uk*

*ufos-aliens.co.uk*

*theregister.co.uk*

[orgoneblasters.com](http://orgoneblasters.com)

[bibliotecapleyades.net](http://bibliotecapleyades.net)

[burlingtonnews.net](http://burlingtonnews.net)

'Alien Base: The Evidence For Extraterrestrial Colonization Of Earth'

- Good, Timothy

[subversiveelement.com](http://subversiveelement.com)

[exopolitics.org](http://exopolitics.org)

[ufomind.com](http://ufomind.com)

[illuminati-news.com](http://illuminati-news.com)

[www.ufodigest.com](http://www.ufodigest.com)

[thewatcherfiles.com](http://thewatcherfiles.com)

[greadatreaty.com](http://greadatreaty.com)

Labels: alien abduction, alien technology, conspiracy, DNA, Dulce Base, human experiments, humanoid, hybrids, military, UFO, underground bases

0

### Looking For A Great Gift Idea?



**Have you had a close encounter or witnessed something unusual? Send us an email**

[Donate](#)

**Please help support  
'Phantoms and Monsters'  
Thanks!**

Email this • Share on Facebook • Stumble It! (1 Reviews) • •  
Technorati Links • Digg This! • Tumblr This • Reddit This • Fark It •  
[Save to del.icio.us](http://del.icio.us)



FOLLOW ME ON *Pinterest*

[Youtube Videos](#)

[Government Grants](#)

[Restaurant Recipes](#)

POSTED BY LON AT 3:23 PM



#### Tag Cloud

Government Grant Psychic Reading  
Restaurant Recipes Youtube Videos

#### 2 COMMENTS:

 PowerPC said...

After reading the correspondence concerning the technician at the Dulce Base one thing struck me that did not seem to make sense. While collecting tapes in an area he would not normally be allowed in he heard a voice over the loud speaker...Cell 34 Compromised, Entity has breached containment. Why would it be necessary to point out the "Entity" had breached containment. All that had to be said was containment breached and everyone that was in the know would have known exactly what was going on. Using the word Entity is a good way to have all kinds of security leaks and misunderstandings. Not very well thought out by a super secret organization. Some of the creatures described are unbelievable and I find it hard to believe that humans would be involved with genetic experiments with human like creatures with multiple legs etc. If they were involved they were not humans but animals themselves.

8:26 PM

 VenatorX said...

Lon

Has anyone truly interested in this "Dulce Base" aspect of UFO subculture ever attempted to do a satellite subterranean scan to determine if there is anything unnatural below? The entirety of the UFO phenomenon has been murkily deranged by the penetration of non substantiated BS coming from those merely looking to make money as authors. I'm tired of it. Can you or ANYONE else provide one single REAL shred of substantiated evidence that Dulce exists? Or are we left to the usual process of attempting to discern which entertainment to entertain "today" and so on? If the truth in any

way REALLY does matter in this case, I would simply suggest one such satellite based scan prior to freaking everyone out about "bigfoot like hominids" running around attacking cattle with surgical precision. It sure would be a "switch" to see the "paranormal authors" who call themselves "researchers" get just a tad more responsible with respect to basic objectivity and the, eh hem, TRUTH.

Thanks,  
Jeff

9:49 AM

[POST A COMMENT](#)

**LINKS TO THIS POST:**

[CREATE A LINK](#)

[<< Home](#)



#### PREVIOUS POSTS

- Just the Facts? - Jackie O Tapes, 'False Flag' Ali...
  - Recalling the Clarence Bigfoot Hoopla
- Esoterica: Ozark Ghost Photo, Djinn Attack Saudi M...
- Bloodless Carnage: Livestock Attacks Continue in t...
- Just the Facts? - NJ Bigfoot Sightings Increase, B...
- Roadkill Creature Still Mystery After DNR Examinat...
  - Admiral Byrd's Most Excellent Adventure
- Just the Facts? - Northern Territory UFO, Reward F...
- This Week On 'Beyond the Edge' Radio - Author / Le...
- Strange Orange Substance Washes Ashore at Kivalina...



## The Hunger Games Store

[Shop now](#)

Illustration © 2008 Scholastic Inc. from *THE HUNGER GAMES* written by Suzanne Collins. Privacy

**Have you had a close encounter or witnessed something unusual?**

Send us an email



This site is licensed under a Creative Commons Attribution-NonCommercial-No Derivative Works 3.0 United States License.


Hotlinking of P&M Network images and copyrighted material is strictly forbidden unless permission is obtained.


'Phantoms and Monsters' is protected under the Lanham (Trademark) Act (Title 15, Chapter 22 of the United States Code)



[www.beyondtheedgeradio.com](http://www.beyondtheedgeradio.com)

**Shop from over**  
700+ million products or create your own



[SHOP NOW >](#)  


# HAUNTED EARTH

Paranormal Video  
Investigations



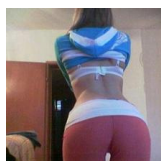
Where the stars *sign*

[CLICK HERE](#)

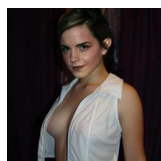
*Strickler's*  
CELEBRITY AUTOGRAPHS



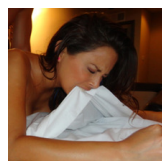
**They're Just Too Big**



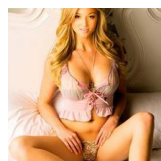
**Hot Girls In Yoga Pants**



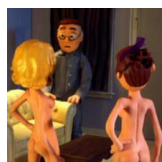
**Naughtiest Celebrity Sideboobs**



**How To Be Awesome At Sex**



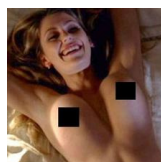
**Don't Just Look, Come Here**



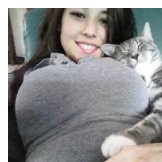
**10 Pantsless Moments On Adult Swim**



**Most Unbelievable Bums**



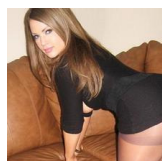
**23 Tantalising Nude Scenes**



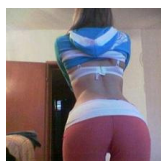
**Cute Little Kitty Sleeping**



**Celebrities With Perfect Boobs**



**100 Nice Legs Wrapped In Stockings**



**Hot Girls In Yoga Pants**



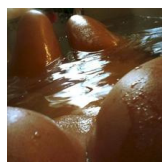
**Larger Than Life**



**The Anatomy Of Attraction Quiz**



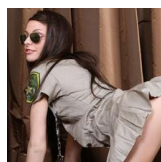
**Emma Watson Scandle**



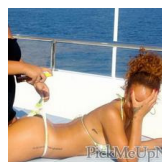
**45 Sexy Poses From Her Perspective**



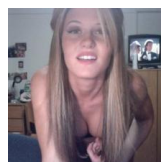
**Scarlett Johansson's Super Assets**



**The Cops Get Naughty**



**Rihanna's Private Picture Collection**



**Freshman Uploads Naughty Pictures**

\* \* \* \* \*

**'Phantoms and Monsters' is protected under the Lanham (Trademark) Act (Title 15, Chapter 22 of the United States Code)**

#### Disclaimer:

The publication of any and all content e.g., articles, reports, editorials, commentary, opinions, as well as graphics and or images on this web-site does not constitute sanction or acquiescence of said content unless specified; it is solely for informational purposes.

#### Fair Use Notice:

This site may contain copyrighted material the use of which may not be specifically authorized by the copyright owner. We are making such material available in our efforts to advance understanding of environmental, political, human rights, economic, democratic, scientific, social justice, and religious issues, etc. We believe this constitutes a 'fair use' of any such copyrighted material as provided for in section 107 of the US Copyright Law. In accordance with Title 17 U.S.C. Section 107, the material on this site is distributed without profit to those who have expressed a prior interest in receiving the included information for research and educational purposes.

You understand that all Content posted on, transmitted through, or linked from the Phantoms and Monsters Site, are the sole responsibility of the person from whom such Content originated. You are responsible for all Content that you post, email or otherwise make available via the Phantoms and Monsters Site. Phantoms and Monsters does not control, and is not responsible for Content made available through the Phantoms and Monsters Site. By using the Phantoms and Monsters Site, you acknowledge that you may be exposed to Content from other users that is offensive, indecent, inaccurate, misleading, or otherwise objectionable.

