



HOME

MASSIVE RED ORBS

GUESTBOOK

FEEDBACK

*ORBS AND PLASMA
CLOUDS*

FACES IN ORBS

*THE VERY VERY
STRANGE*

NATURE SPIRITS?

*ETS WATCH US SEEING
THEM*

Orbs and Plasma Clouds

**This website is updated on a regular basis so please keep
looking.**

Last updated 25th Sept 2012

The latest additions are at the beginning of this file.

The plasma clouds in the following 2 pictures were both photographed on the 20th Sept. You may notice the almost human eyes in both images. I intend to take a closer look at the one below as I am certain there are parts to enlarge which will be of interest. I will add them shortly.



The following image was captured about 30 seconds after the one above. Once again, look at the eye which appears in the plasma cloud. Look at next pic to see enlargement of that area.

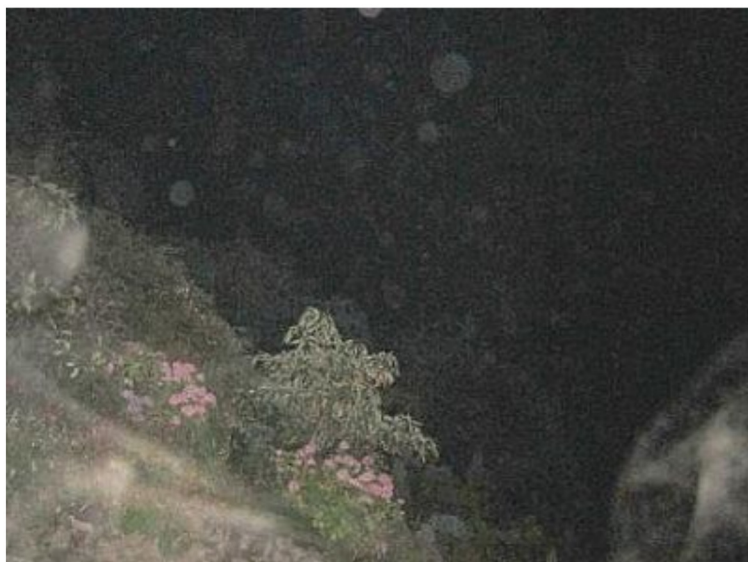
Find... >>



Cosy Cosies

Handmade fabric cosies and covers for Teapots, Hot Water Bottles and iPhone

www.cosycosies.com



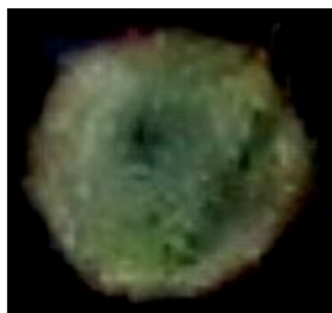
This fantastic display of orbs was photographed in May.



It was exciting to see the bright red orb in the photo below captured on 4th August. I hoped that when I cropped and magnified it, it would be possible to see inside the orb. Unfortunately I was unable to get a clear image of its interior. But if you look at the 2nd picture I had a better result with another orb in the same picture. The white vertical streak between the Red and white orbs is a leaf rake.



If you look at the bottom centre of the following orb you will find a strong face with an unmissable smile. Look a little longer to see more images, not as clear as that one but definitely there.



When an orb of bright white light is photographed, like the one in the following picture, it is usually impossible to alter the contrast, and/or brightness to make it possible to get some idea of what if anything is behind the light.

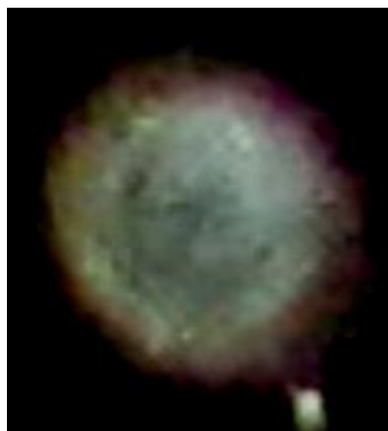


The following 4 entries are enlargements of portions taken from the above picture.

The image below is a point in fact, this light is so bright that I was unable to 'tone it down' But notice there are shadowy images behind and around the light.



Concentrate on the centre of the orb below. You should find a large face which seems to me to portray a man wearing glasses.



In the following, 3 discs can be seen flying in what seems to be an intentional formation.



I cropped the middle brightest disc and enlarged it. Look for the faces it contains.





The following picture is an enlargement of just one of the orbs present in the above. Notice the images in the mist above and behind the orb.



We have had a number of pictures lately where the plasma has been localised in a particular area. We found a lot of images in this plasma and are having difficulty in choosing any one in particular to put on the site. Anyway, here goes . I will start with just one image of many found in the following picture.



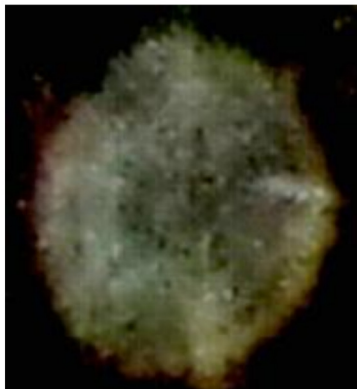
In the enlargement below it appears as though you are looking at more than one dimension. It's almost like looking through a veil where different images are superimposed one on top of another. Study the image to see what I mean.



The following was photographed on 23rd May



The two images below are magnifications of just two of the orbs in the above photo. I also adjusted the contrast to make them clearer.

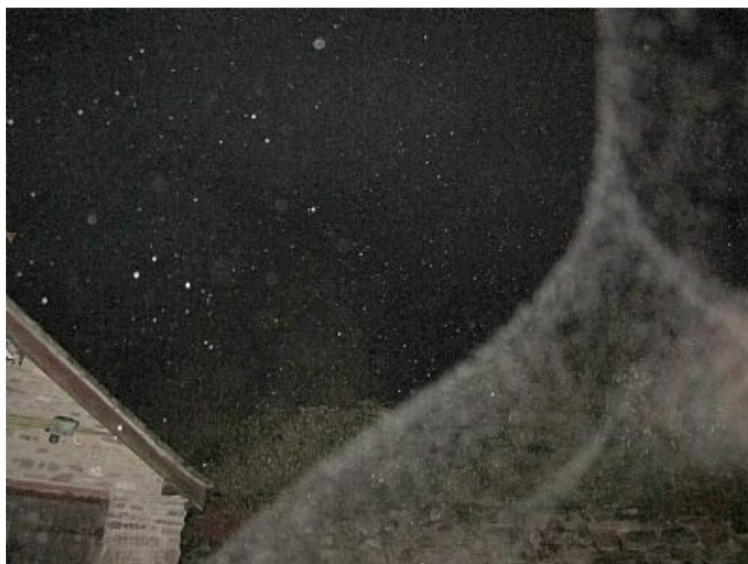




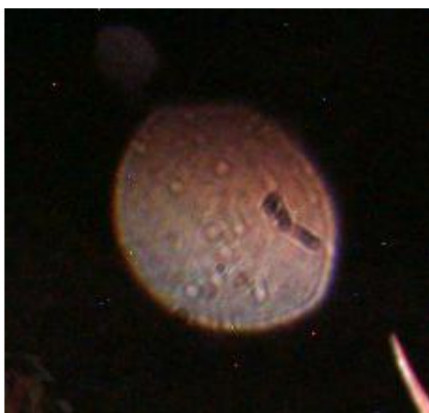
The following image was photographed 20th April. There was no trace of the plasma in the following shot which was taken some 6 seconds later.



The first picture below was taken on 6 April. The plasma form gave us quite a surprise. I think it is rather beautiful.



The following orb is interesting. Apart from its colour there appears to be a 'window' in it. Look at 2nd image to see magnification of that area.



There are either eyes looking out, or faces. They are not clear enough to be sure which BUT whilst on line inserting the updates I see there are other faces in the magnified area. I'll take another look at the original and see what I can find.



Looking at the above reminded me of a photo I took in feb 2009 during a snow storm. I took care to keep under the porch of the house and to make sure the camera lens remained dry. It was quite easy to see the difference between snowflakes and orbs.



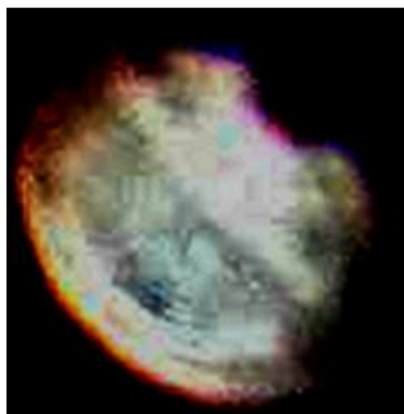
The big 'orb' in the centre of above pic reminded me of a spacemans helmet. This is how it looked after cropping and enlarging.



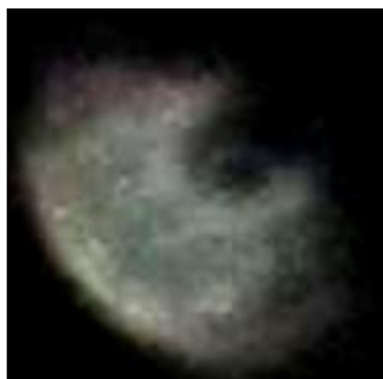
I think the following image is interesting as there are two different forms in the same picture. Firstly I decided to try and take the brightness out of the larger shape to see what might be behind the light.



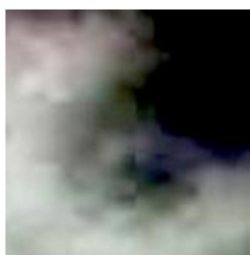
What I found in picture 2 came as a surprise. As you will notice, once most of the brightness was removed it revealed quite a complex object. It is as though the real shape and substance was concealed behind the light. I knew there was something coming out at the top of the image. So once again I cropped and magnified the area see pic 3.



There does seem to be a number of heads coming out of the top of the 'orb' I then went through the same process with the smaller image see pics 4 and 5.



Once again although not very clear there is what appears to be a face looking outwards.



The images which contain 'plasma' (see below) are interesting in that not only can the shapes be lovely to look at, but interestingly in the following picture taken the plasma will have completely disappeared.



The following picture is unusual in that it shows a blue orb obviously stationary whilst the other is moving at terrific speed as you can see by the trail it leaves behind.





In the picture below the dense 'mist' which has formed, and for the want of a better word has been named 'plasma' was not visible to the naked eye. This rules out either normal mist or smoke from some identifiable source. This is true for all the photos showing plasma that have been included on this site.



The picture below which looks like a very large golf ball appears to have a hole in it. I found a face in that hole but was unable to bring it up clearly enough to include it in a close up.



I have seen the beautiful bright orb in the pic below on many occasions, and have been able to identify it by its markings.



Although the picture below is of a poor quality it is worth including because of the 'not quite human' looking manifestation it contains.





I wish I knew where the rainbow light was coming from in the picture below.



Also in the 2 following, there's a bright light on the right hand side of the picture which seems to have distorted that area, leaving the rest of the picture in focus. So it's unlikely to have been a camera fault.



Also in the pic below the distortion on the right side is significant. Whereas on the left side it's perfectly normal, and the right colour for the time of evening these pics were taken. Also as you can see, there is a bright orb on the right. But I don't think the light was coming from that.



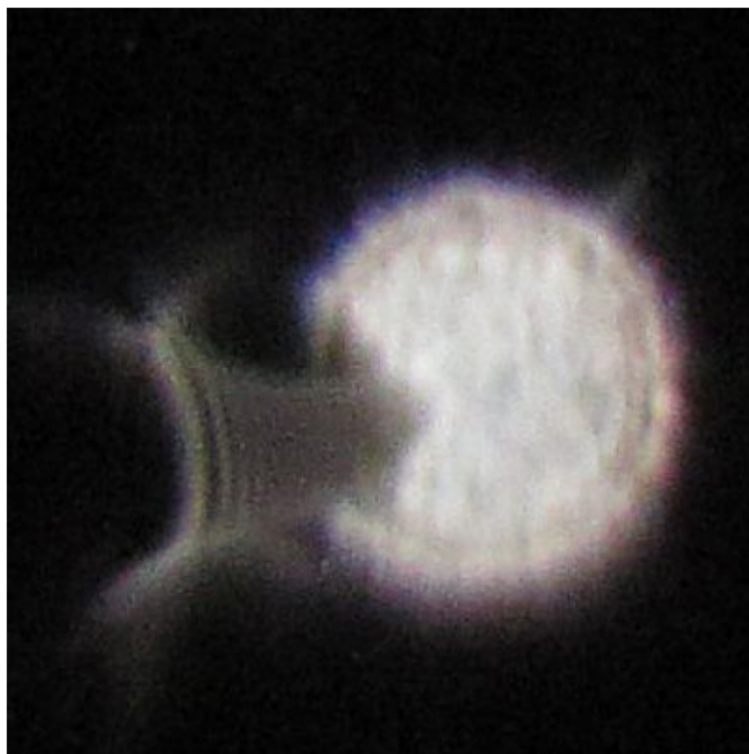
The red swirl on the left hand side of the following picture is so intense in colour that I wonder if it could be a form of very high energy.







The picture below was taken in Oct 2011 and would be interested to hear if anyone has any idea what it could be.



Below is the original picture taken before enlarging the above orb.





Orbs & More

HOME

MASSIVE RED ORBS

GUESTBOOK

FEEDBACK

ORBS AND PLASMA CLOUDS

FACES IN ORBS

THE VERY VERY STRANGE

NATURE SPIRITS?

Orbs and Plasma Clouds

This website is updated on a regular basis so please keep looking.

Last updated 26th May 2012

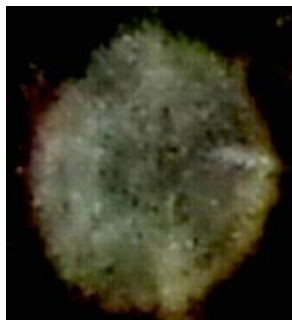


The latest inclusions are at the beginning of the file.

The following was photographed on 23rd May



The two images below are magnifications of just two of the orbs in the above photo. I also adjusted the contrast to make them clearer.



Find... >>



AdChoices >

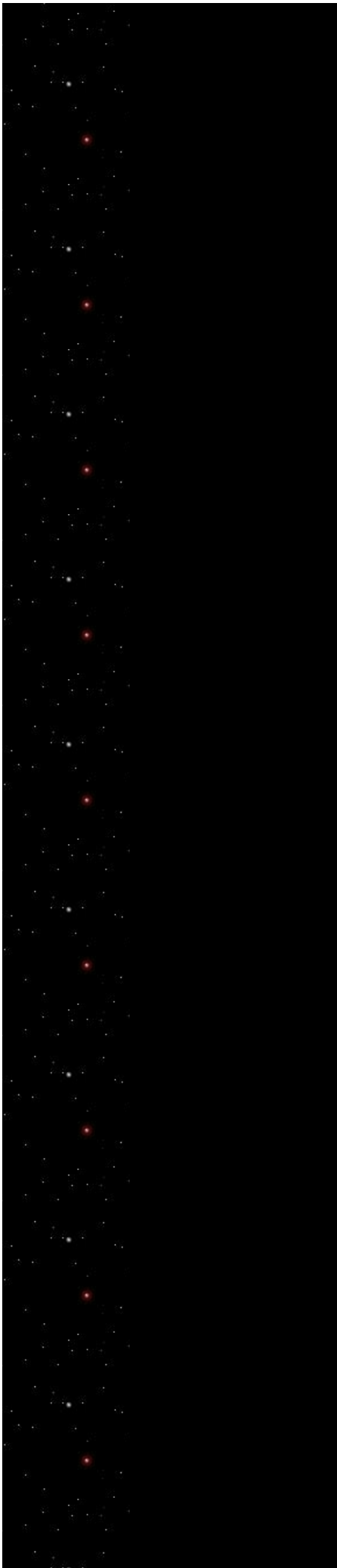
Microsoft® Private Cloud

Microsoft® Private Cloud: Built for the Future. Ready Now. Learn More!

Microsoft.com/readynow

Run your own Eco-friendly home business

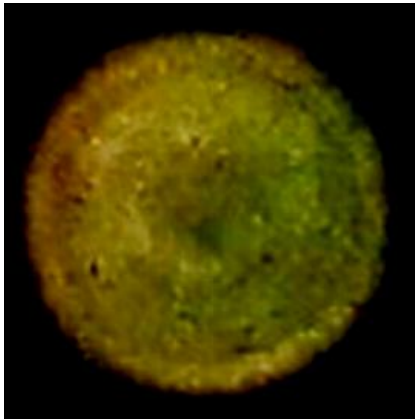




Once again I cropped and magnified the image below to make just one of the many faces it contains clearer.



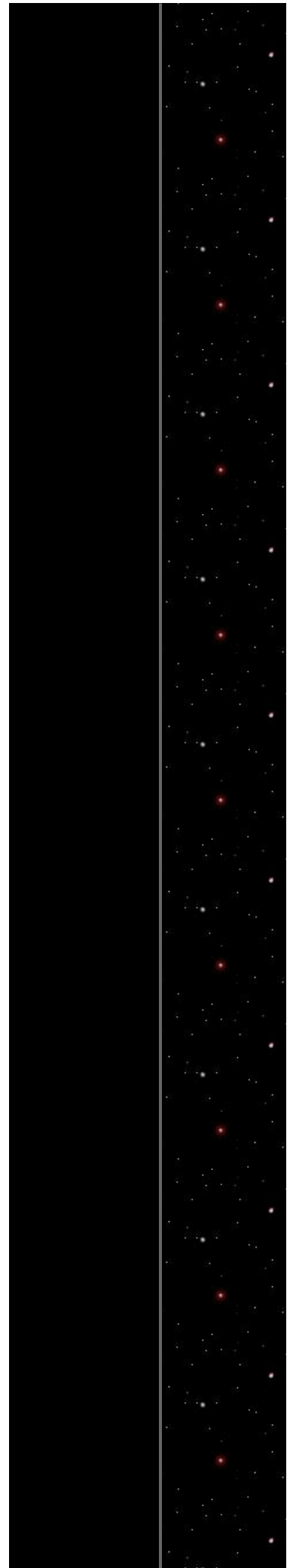
The image below would normally have gone into the Faces In Orbs file. I decided to use Orbs and Plasma because strangely this orb was the only one present and such an unusual colour I put it here instead. But you will find faces in this orb.

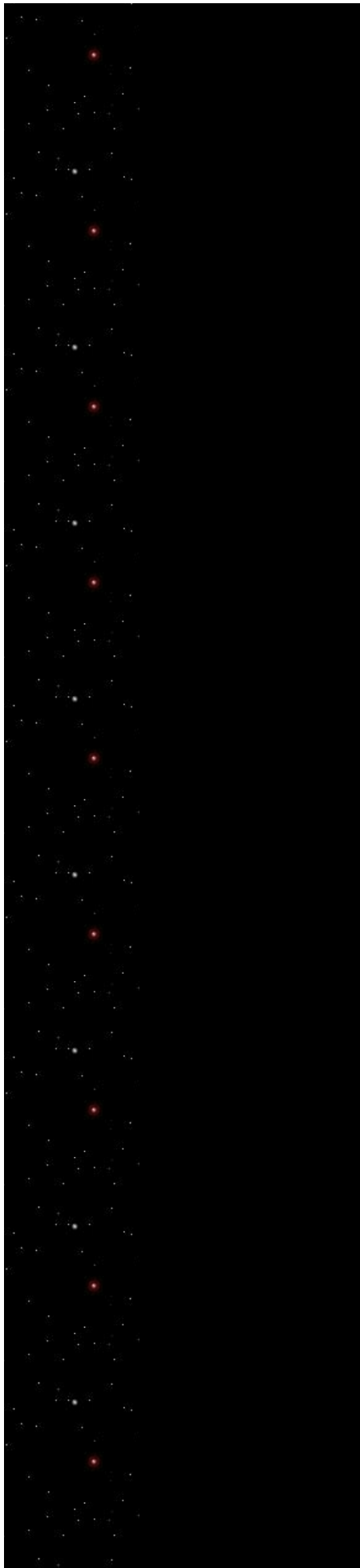


As usual, when plasma is caught on camera, there is never any sign of it in the next shot. I found a number of faces in the plasma, but so far I have been unable to crop and enhance them well enough to be included in this file. Scrolling down will show where I had better results.

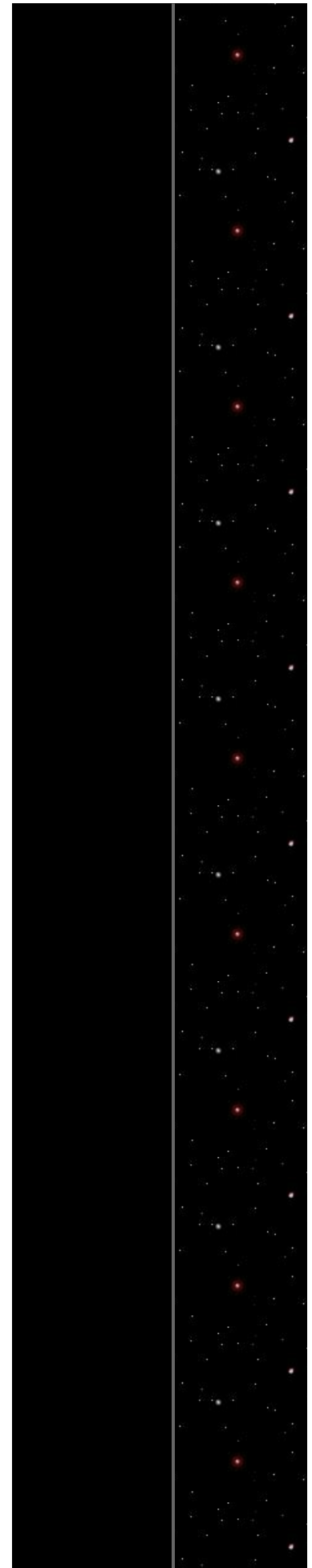


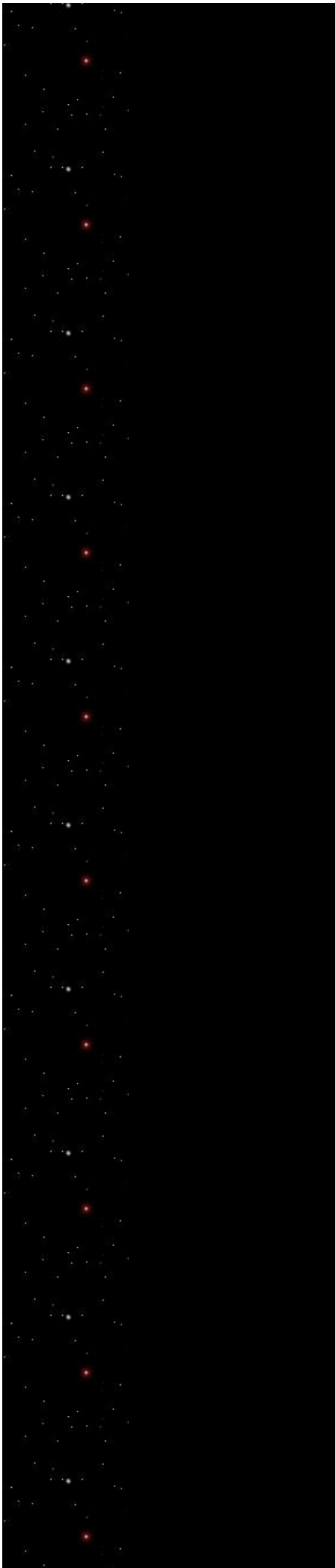
The following image was photographed 20th April. There was no trace of the plasma in the following shot which was taken some 6 seconds later.



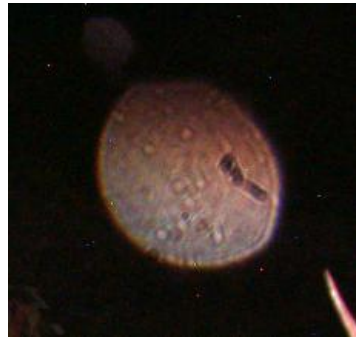


The first picture below was taken on 6 April. The plasma form gave us quite a surprise. I think it is rather beautiful. After studying, and magnifying parts, I realised that it was full of faces. The three pictures which follow the main one are only a fraction of images I have found in this picture. I will add more at a later date, as it takes time to find and crop them all.

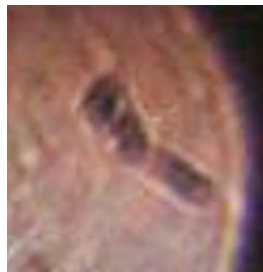




The following orb is interesting. Apart from its colour there appears to be a 'window' in it. Look at 2nd image to see magnification of that area.



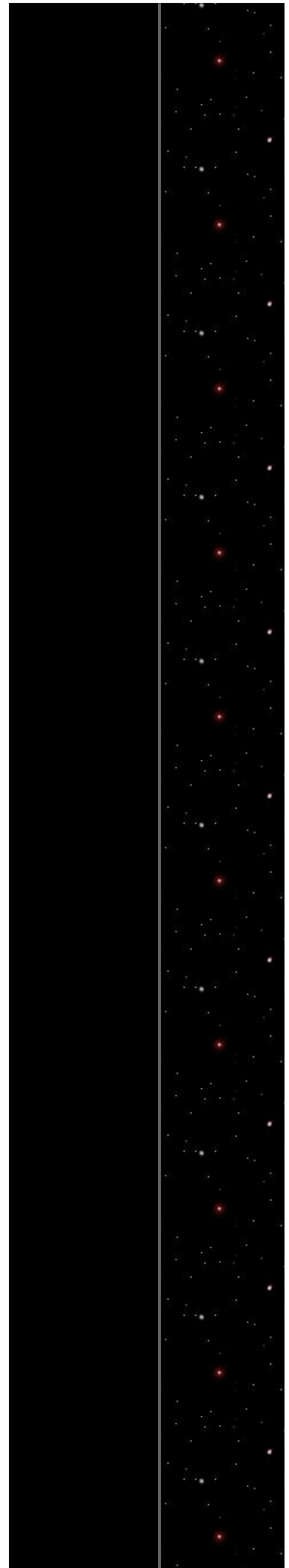
There are either eyes looking out, or faces. They are not clear enough to be sure which BUT whilst on line inserting the updates I see there are other faces in the magnified area. I'll take another look at the original and see what I can find.

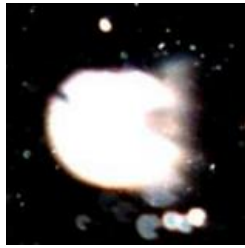


Looking at the above reminded me of a photo I took in feb 2009 during a snow storm. I took care to keep under the porch of the house and to make sure the camera lens remained dry. It was quite easy to see the difference between snowflakes and orbs.



The big 'orb' in the centre of above pic reminded me of a spacemans helmet. This is how it looked after cropping and enlarging.

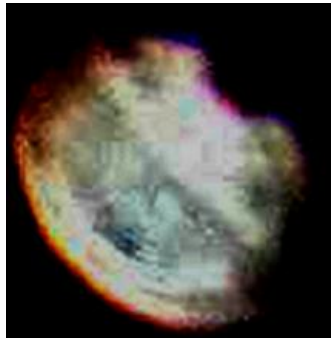




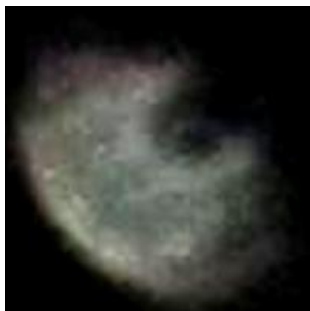
I think the following image is interesting as there are two different forms in the same picture. Firstly I decided to try and take the brightness out of the larger shape to see what might be behind the light.



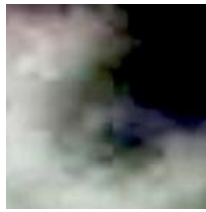
What I found in picture 2 came as a surprise. As you will notice, once most of the brightness was removed it revealed quite a complex object. It is as though the real shape and substance was concealed behind the light. I knew there was something coming out at the top of the image. So once again I cropped and magnified the area see pic 3.



There does seem to be a number of heads coming out of the top of the 'orb' I then went through the same process with the smaller image see pics 4 and 5.



Once again although not very clear there is what appears to be a face looking outwards.

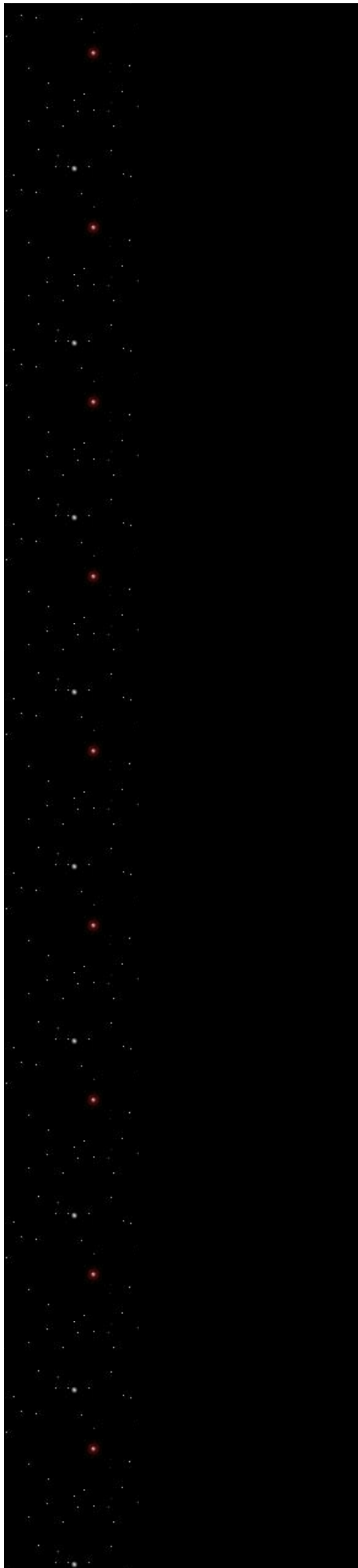


The amount of orbs which are now beginning to appear in each photograph we take is increasing by leaps and bounds. When we first became interested in orb photograph we had to be patient and it was at least 3 weeks before we began to see orbs in our photos. Now they seem to come rushing in the moment we start. Looking at the following two pictures the amount of orbs to be seen is incredible. Note that if these were dust particles they would also be noticeable in the lower half of the pictures. They are not. Also when magnified many of them contain faces.

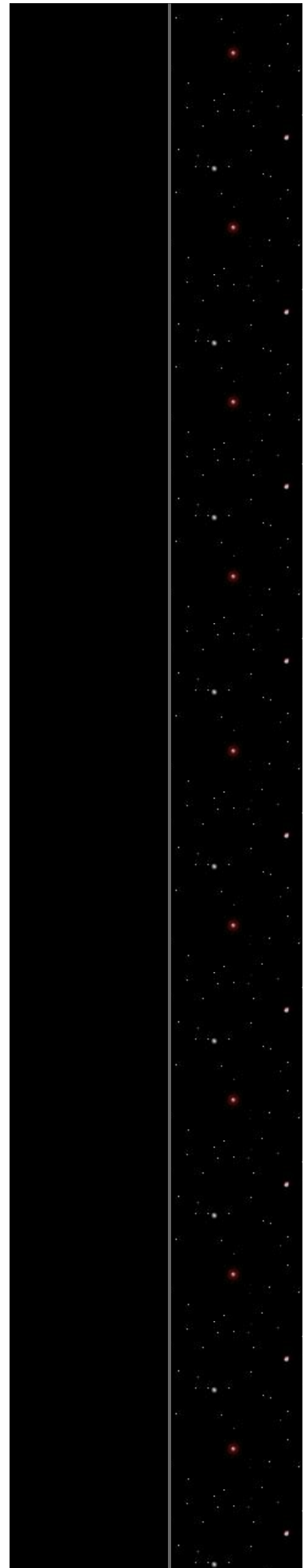


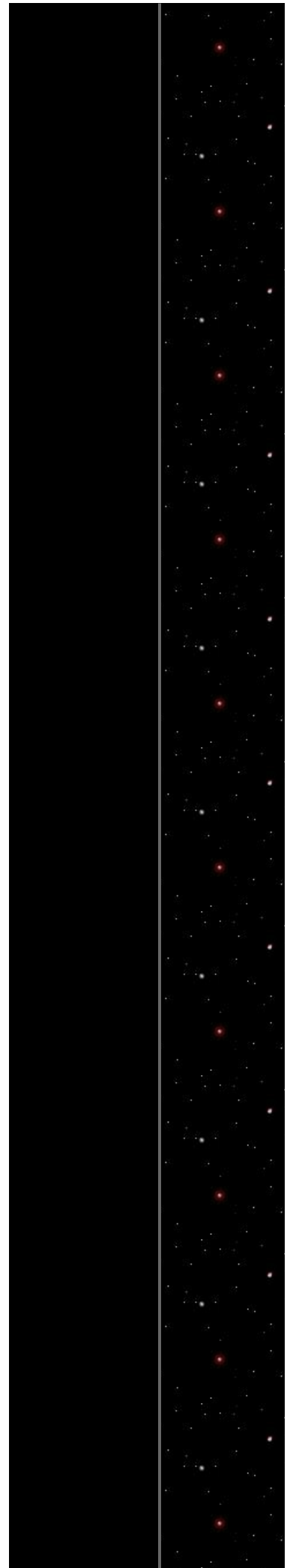
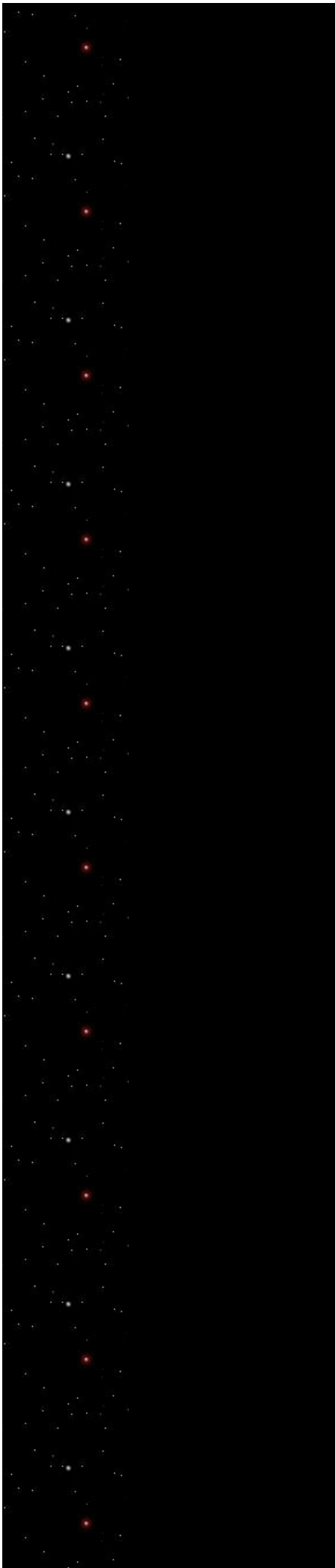
The images which contain 'plasma' (see below) are interesting in that not only can the shapes be lovely to look at, but interestingly in the following picture taken the plasma will have completely disappeared.





The following picture is unusual in that it shows a blue orb obviously stationary whilst the other is moving at terrific speed as you can see by the trail it leaves behind.





In the picture below the dense 'mist' which has formed, and for the want of a better word has been named 'plasma' was not visible to the naked eye. This rules out either normal mist or smoke from some identifiable source. This is true for all the photos showing plasma that have

..... This is a photograph of a bright glowing orb that has
been included on this site.



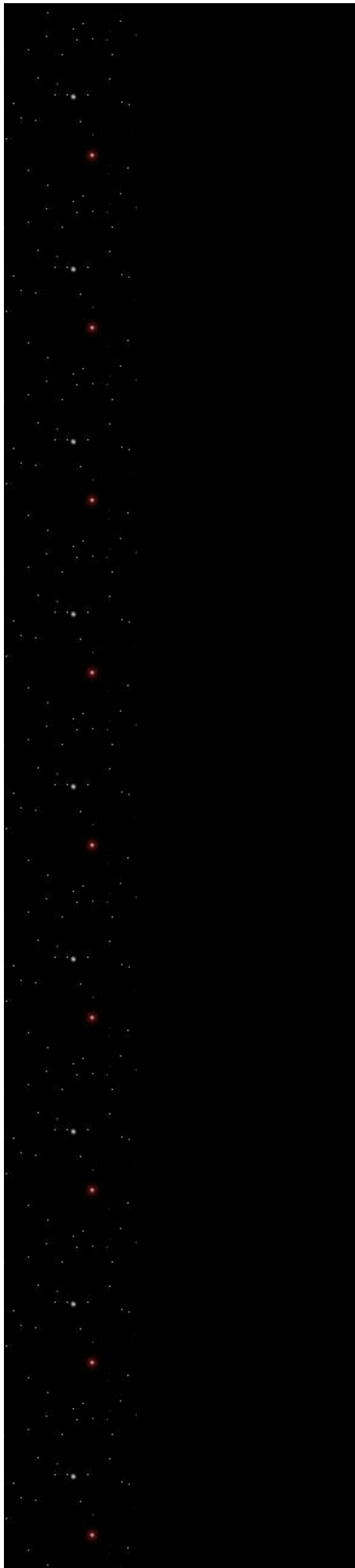
The picture below which looks like a very large golf ball appears to have a hole in it. I found a face in that hole but was unable to bring it up clearly enough to include it in a close up.



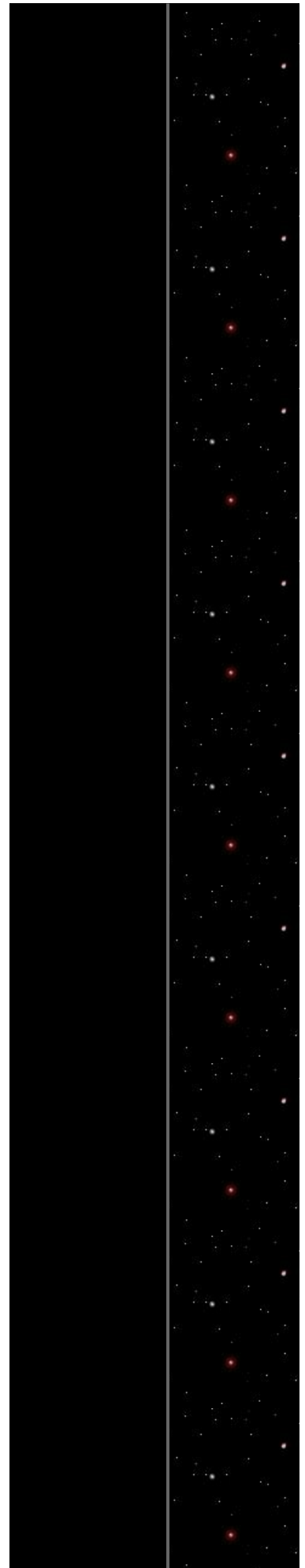
I have seen the beautiful bright orb in the pic below on many occasions, and have been able to identify it by its markings.

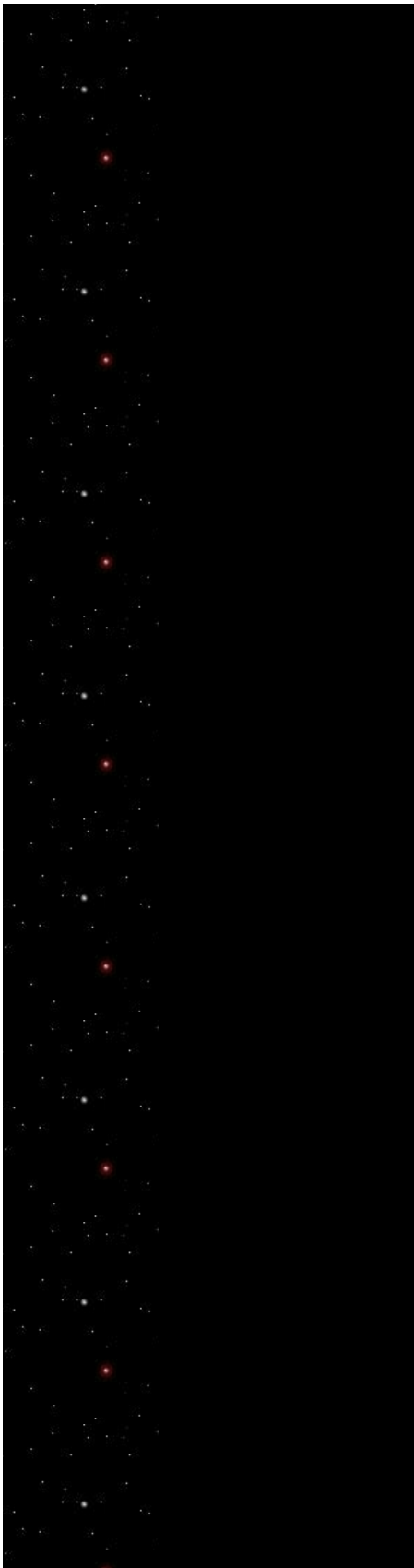


Although the picture below is of a poor quality it is worth including because of the 'not quite human' looking manifestation it contains.



I wish I knew where the rainbow light was coming from in the picture below.





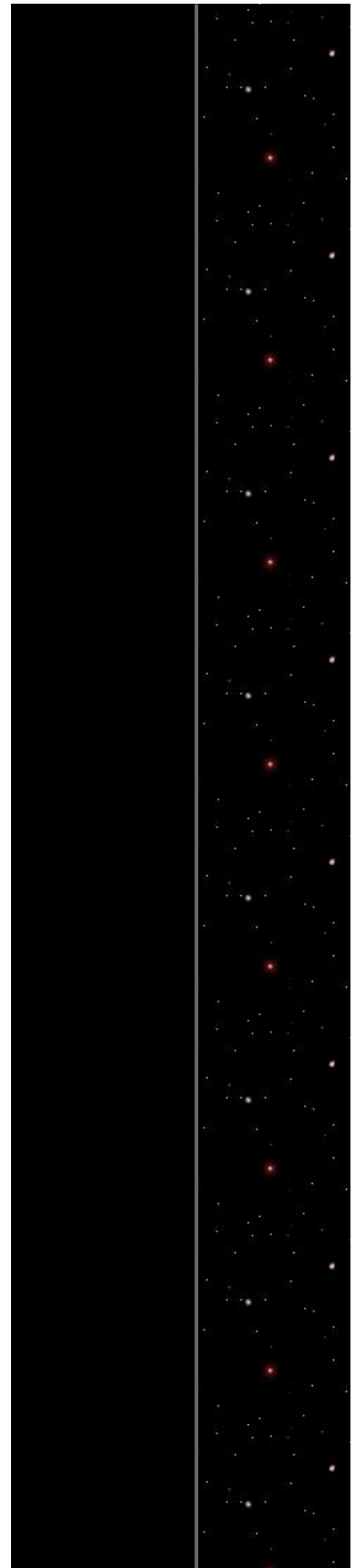
Also in the 2 following, there's a bright light on the right hand side of the picture which seems to have distorted that area, leaving the rest of the picture in focus. So it's unlikely to have been a camera fault.

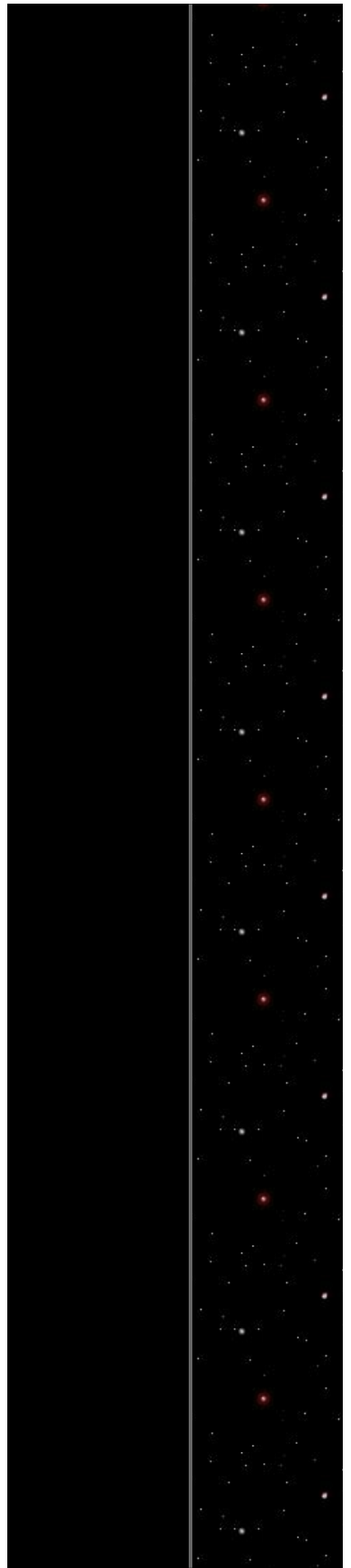
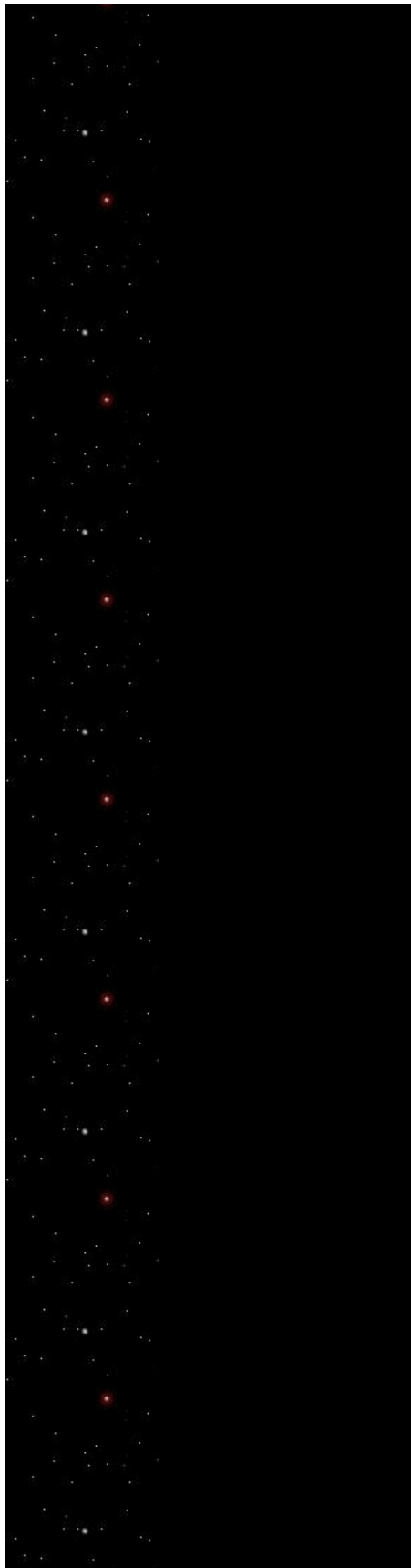


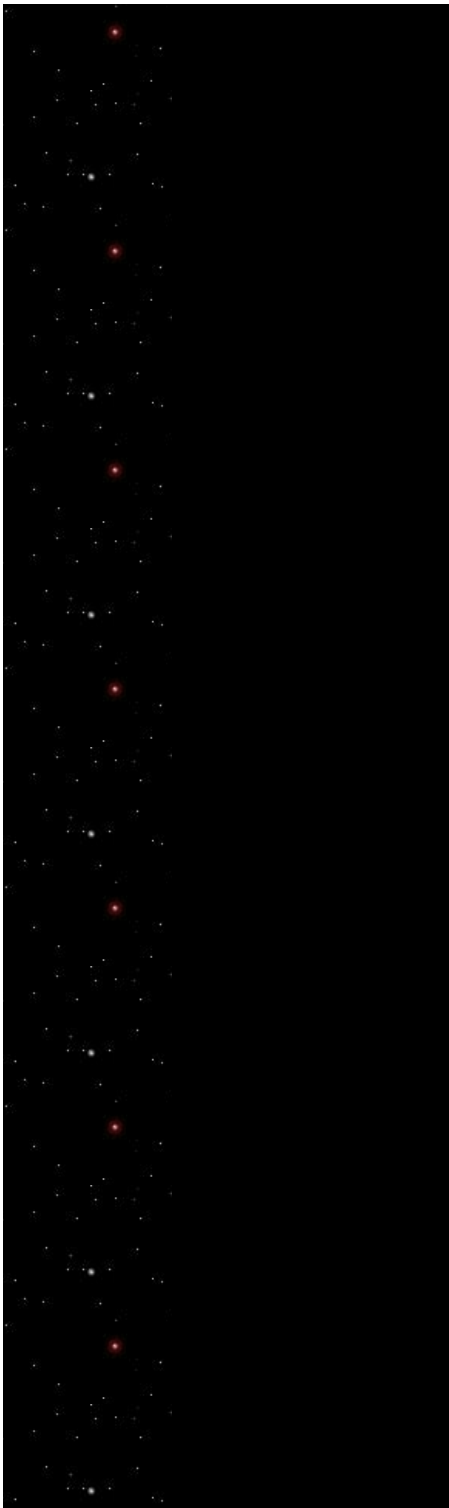
Also in the pic below the distortion on the right side is significant. Whereas on the left side it's perfectly normal, and the right colour for the time of evening these pics were taken. Also as you can see, there is a bright orb on the right. But I don't think the light was coming from that.



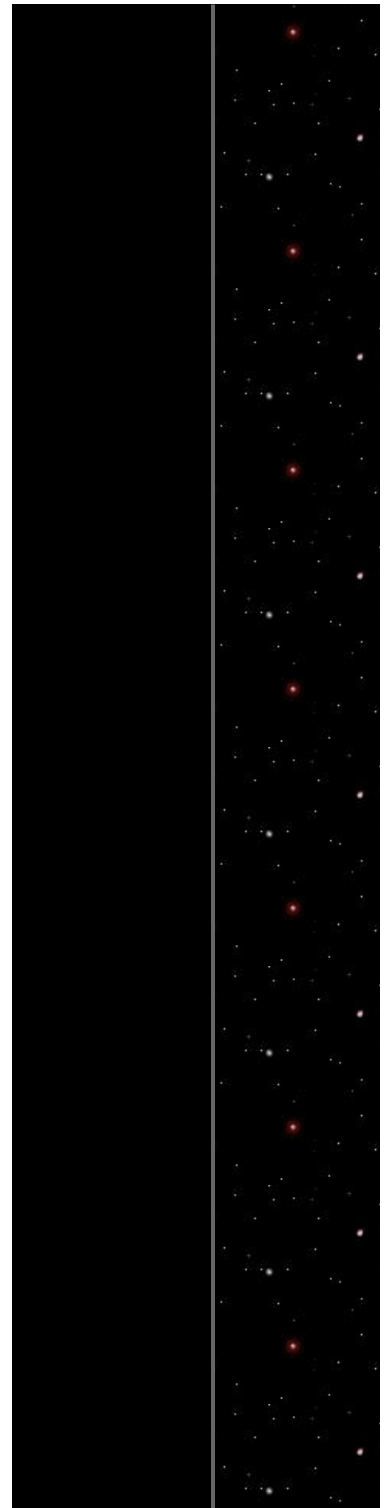
The red swirl on the left hand side of the following picture is so intense in colour that I wonder if it could be a form of very high energy.

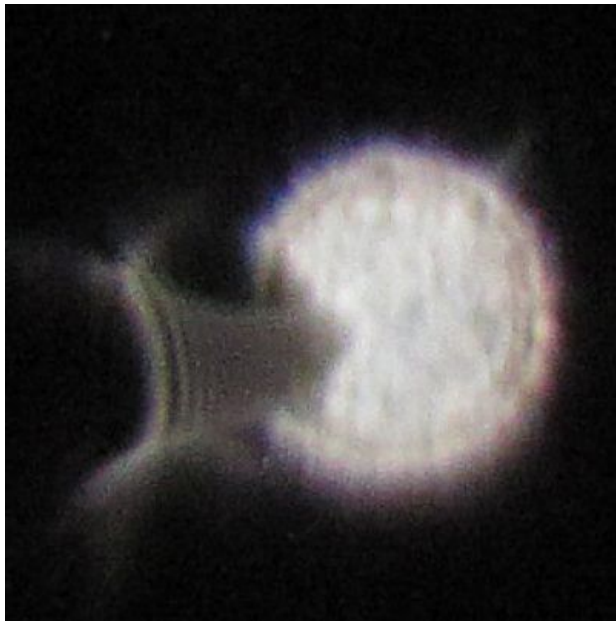
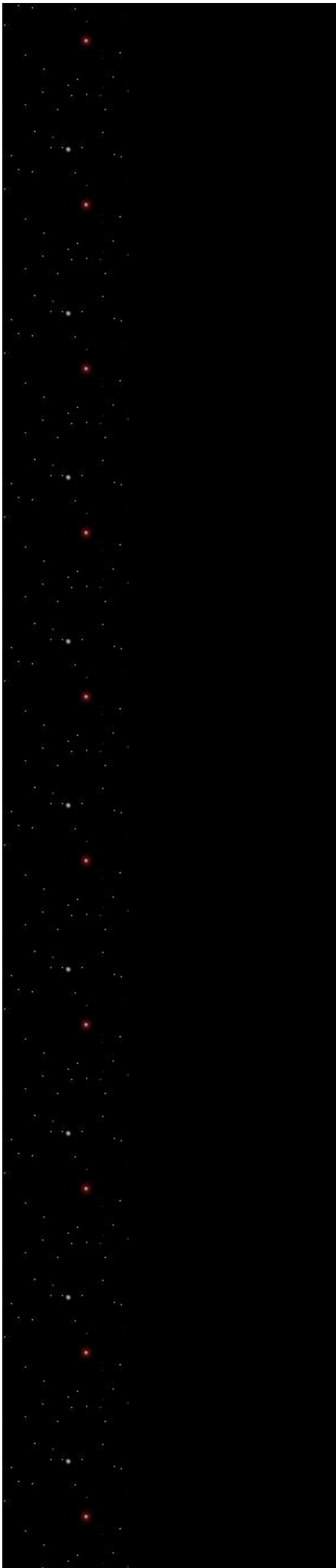




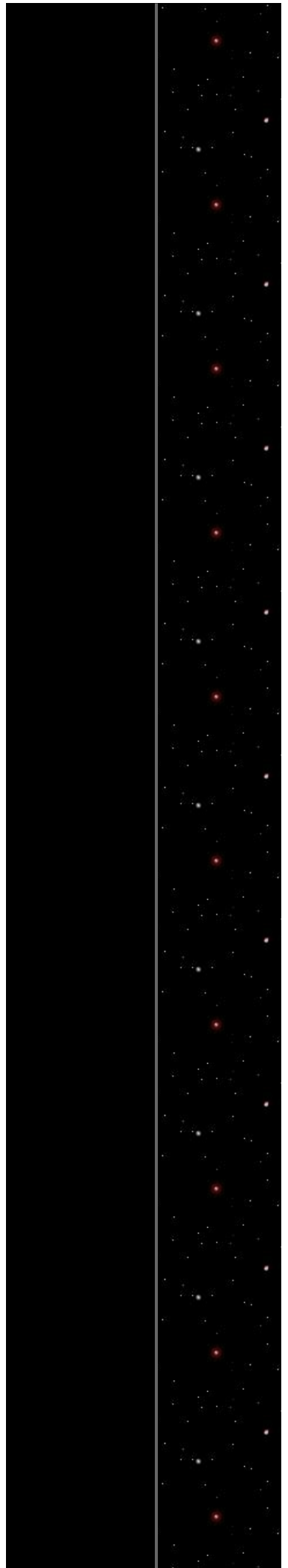


The picture below was taken in Oct 2011 and would be interested to hear if anyone has any idea what it could be.





Below is the original picture taken before enlarging the above orb.





[Become Clairvoyant](#)

Learn How to Unleash Your Inner
Clairvoyant. Access Free Training
www.SilvaIntuitionSystem.com

 spanglefish.com

Part of spanglefish.com - Web Sites. For Anyone. For Free. Sign up now!